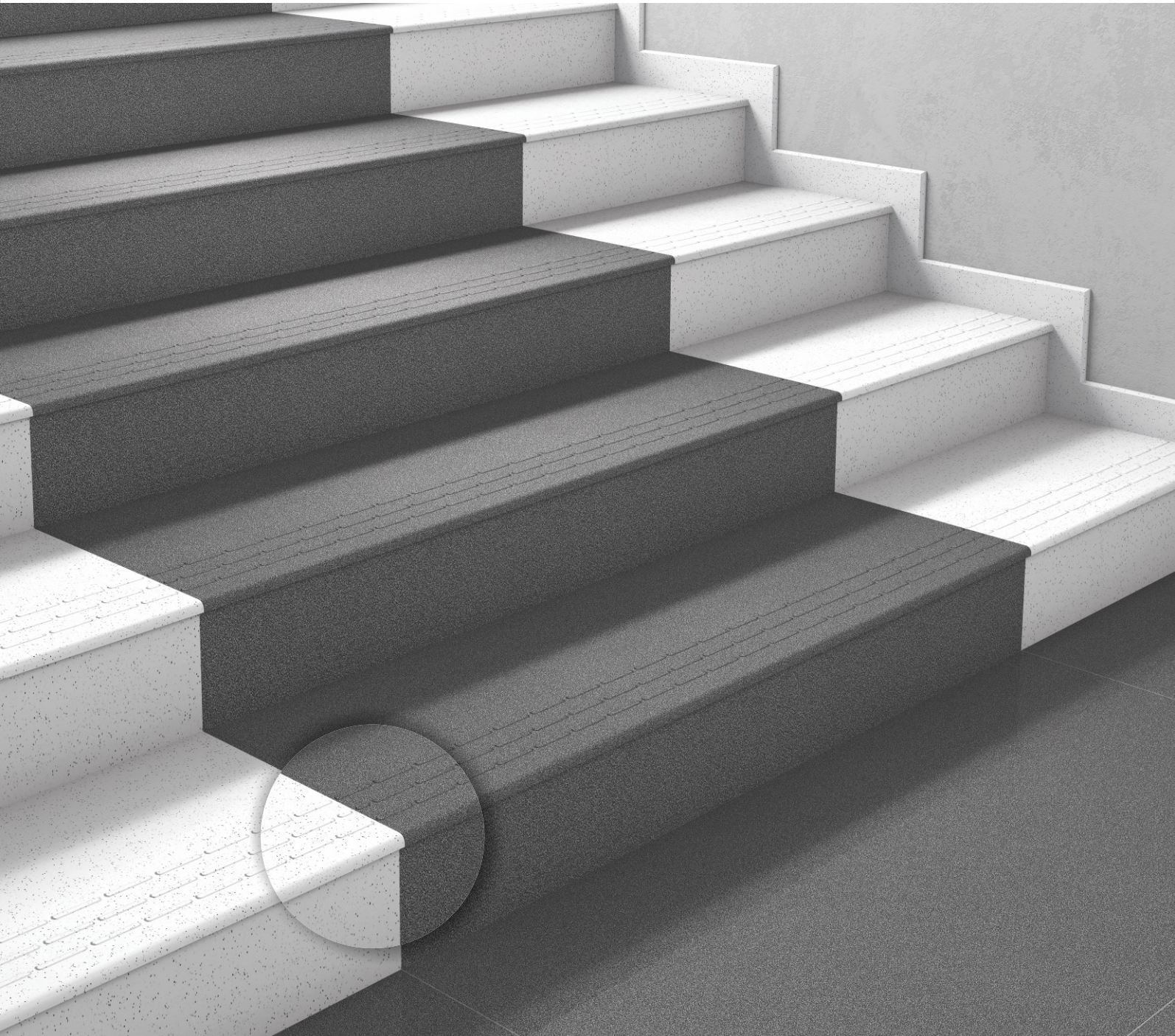


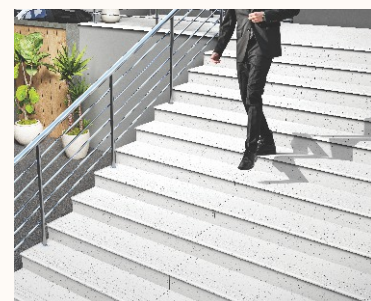
**CASA STEP**  
READY TO INSTALL FULLBODY STEPS



ONE SURFACE, MANY POSSIBILITIES  
**HOUSE OF FULL BODY  
VITRIFIED TILES**

**Casa**  
**FULL BODY TILES**

ONE SURFACE, MANY POSSIBILITIES



**CASA STEP**  
READY TO INSTALL FULLBODY STEPS

# READY TO INSTALL STEP AND RISER

Staircases are not designed for their functionality alone. These practical units are also interesting from a design perspective and a defining feature in houses, rooms, hallways, and more. Casa Step Full Body Step and Riser comes in multiple colors, shades, and anti-skid surfaces to suit your interior and exterior spaces.

**300x1200mm STEP | 200x1200mm RISER**

Highly durable, ideal for heavy traffic and commercial areas indoors and outdoors.

Easy and speedy installation. Better than natural stone cutting and finishing on site.

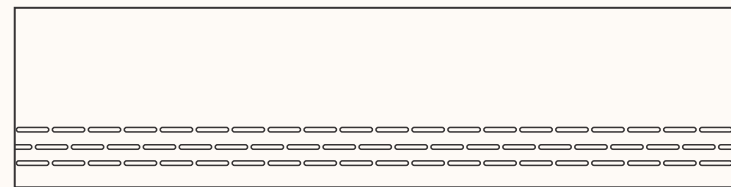
Embossed capsule lines provide extra grip for enhanced safety near the step edge and unique full bull nose edges.

It provides higher strength and durability and offers assurance to replace natural stones in a confident way with the highest abrasion resistance.

Ensures ten times superior surface protection against wear and tear over natural stones.

Available in 6 beautiful Salt & Pepper shades to suit building theme, decor, and desired contrast.

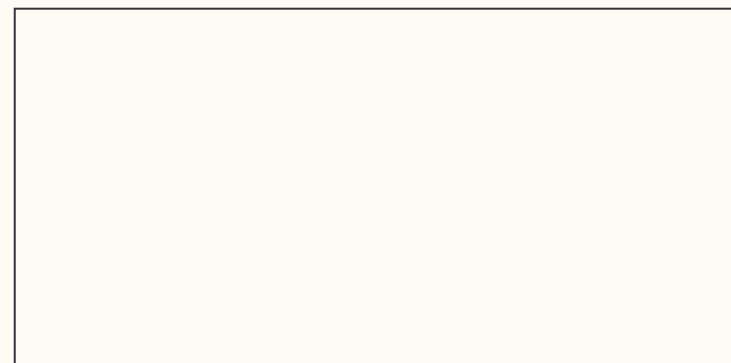
#### Available Sizes :



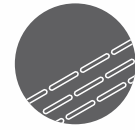
Step 300x1200mm



Riser 200x1200mm



Landing Tile Area 600x1200mm



Self Embossed Lines



Anti-Skid Surface



Bull Nose Finish



15MM Thickness



Water Absorption <0.05%



Easy Laying

## READY TO INSTALL FULL BODY STEPS

### SELF EMBOSSED GROVES

Provides Better Grip

### BULL NOSE FINISH

Prevent Injuries From Sharp Edges

### ANTI SKID PROPERTY

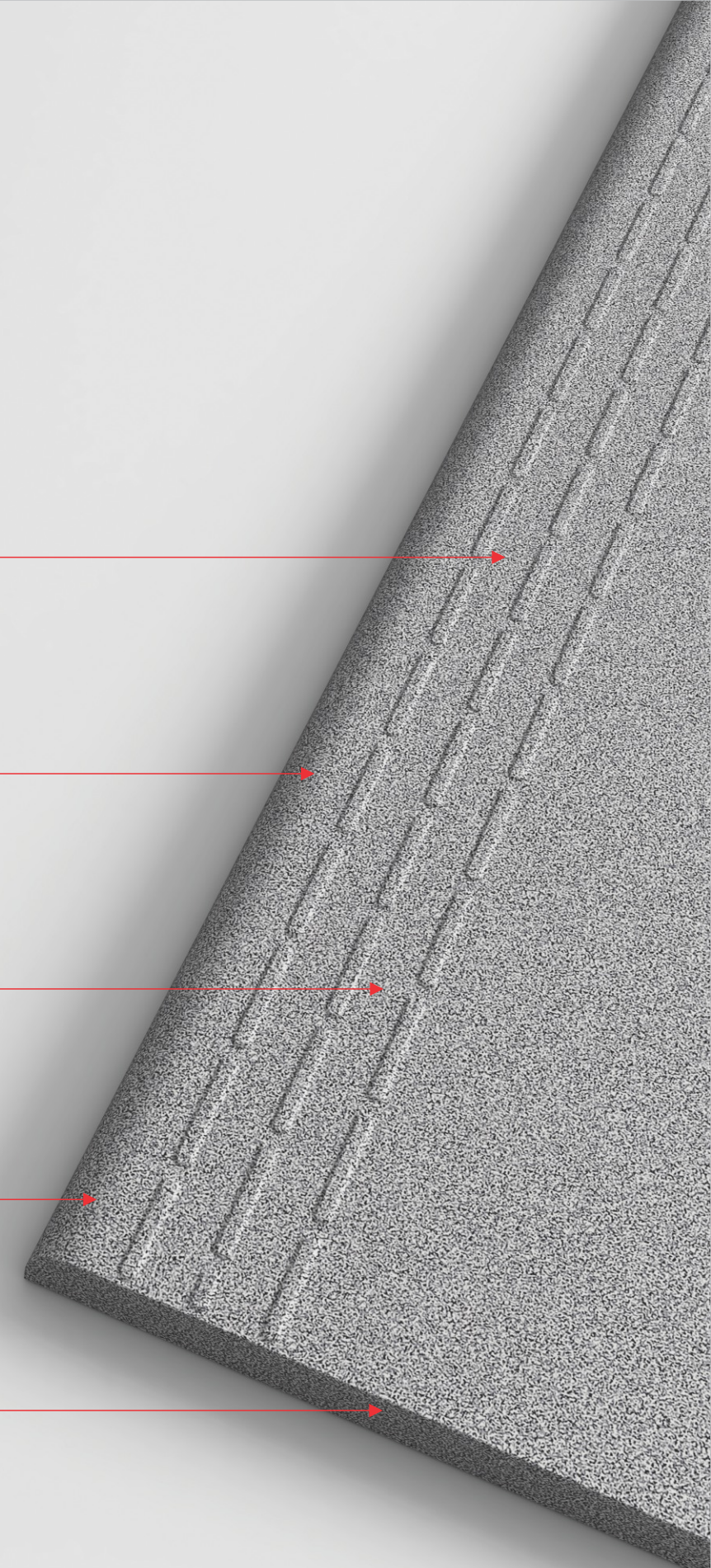
Coefficient Of Friction

### FULL BODY VITRIFIED TILES

Homogeneous Body

### THICK BODY

Thickness 15mm (Step & Riser)



## FEATURES & BENEFITS

### CONCEPT FOR DESIGNING

Casa Step & Riser are available in different designs and colours. As high-quality tiles, they meet the technical requirements of different standards for the production of stairs. The comprehensive concepts comprising basic, décor and functional tiles can be used for a durable and aesthetically pleasing design of the entire indoor & outdoor stair area.

### SAFETY FOR SENIOR CITIZENS, THE PHYSICAL DISABLES, AND CHILDREN

Safety is always the number one priority. It is safe enough for senior citizens, physically disabled, and children. In addition, to slip resistance in compliance with the applicable standards, Casa Step Full Body Vitrified Tiles offer particular durability and also easy-care properties. These full-bodied tiles come with bull nosing and tread lines that make them skid-resistant and much safer than conventional stairs.

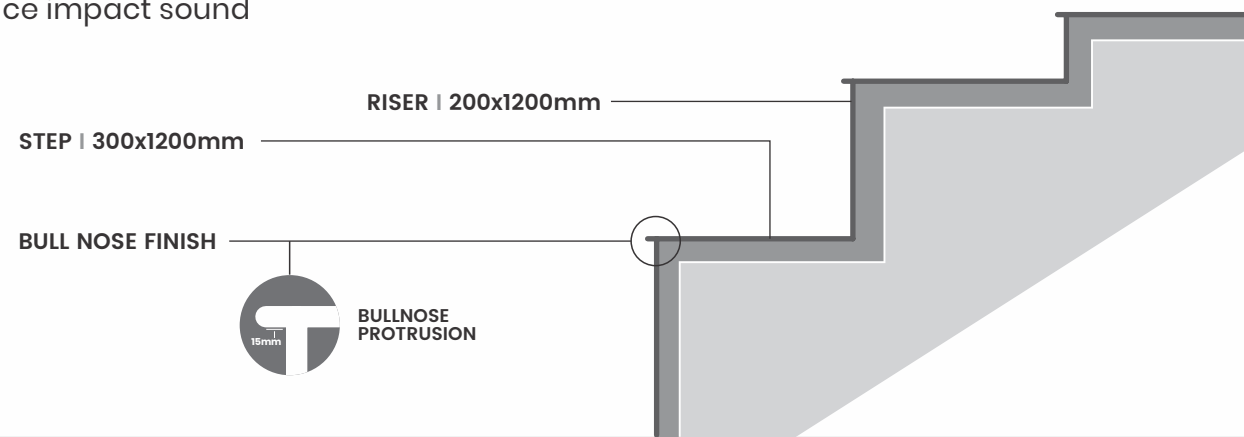
### LONG LASTING & EASY MAINTENANCE

Casa Step is full-bodied, vitrified tiles, which means they absorb very low water and are impervious to weather or wear and tear-induced damage. Fit them and forget them for years of trouble-free performance.

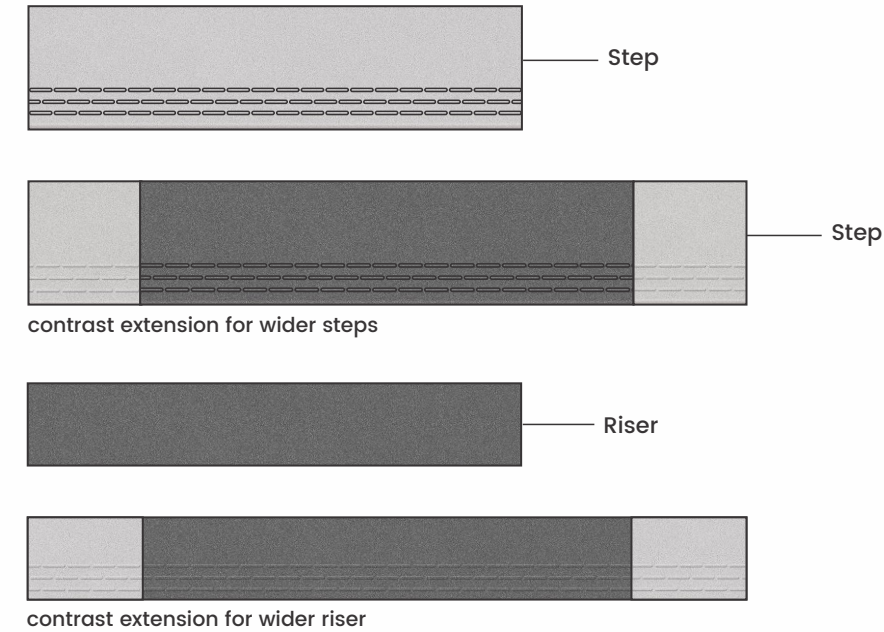
### EASY INSTALLATION

No more handling issues. No more labor-intensive on-site installations, no more wastage costs. Casa Step and Riser can be easily and speedily installed on-site. Chipped and worn-out staircases and the constant need for polishing and repairs are all things of the past.

Prefabricated stairs with bearing surfaces insulated to reduce impact sound



Casa Steps are available in 300x1200mm. These can be used in full size and cut size, depending on the requirement. While the riser tiles are available in the convenient size of 200x1200mm, for stairs requiring higher width, contrast shades can be used on either side to get the wider stairs.



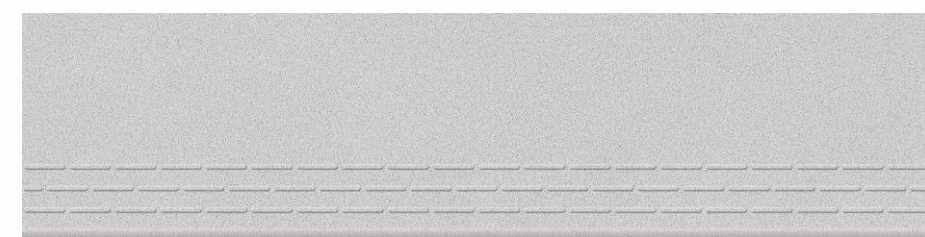
GRANITE	CASA STEP
Variation in shades, color & density	No color or density variation
Has to cut in sizes	Ready to lay tiles
Bull-nosing, half nosing needs to be done	Ready bull nose
Longer installation time	Easy to install
High Cost	Lower cost than granite
Affected by weather, hot & cold	Impervious to weather
High maintenance	Zero maintenance
Cut & grooves need to be done	Ready embossed grooves



STEP & RISER



CATEGORY : LIGHT



Step Cemento

300x1200mm



Riser Cemento

200x1200mm



STEP & RISER



CATEGORY : DARK



Step Coal

300x1200mm



Riser Coal

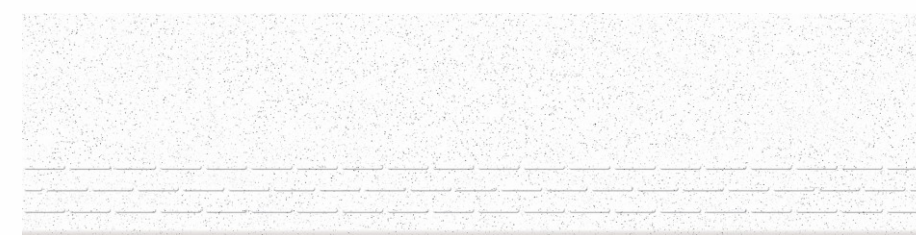
200x1200mm



STEP & RISER



CATEGORY : DARK



Step Gesso

300x1200mm



Riser Gesso

200x1200mm

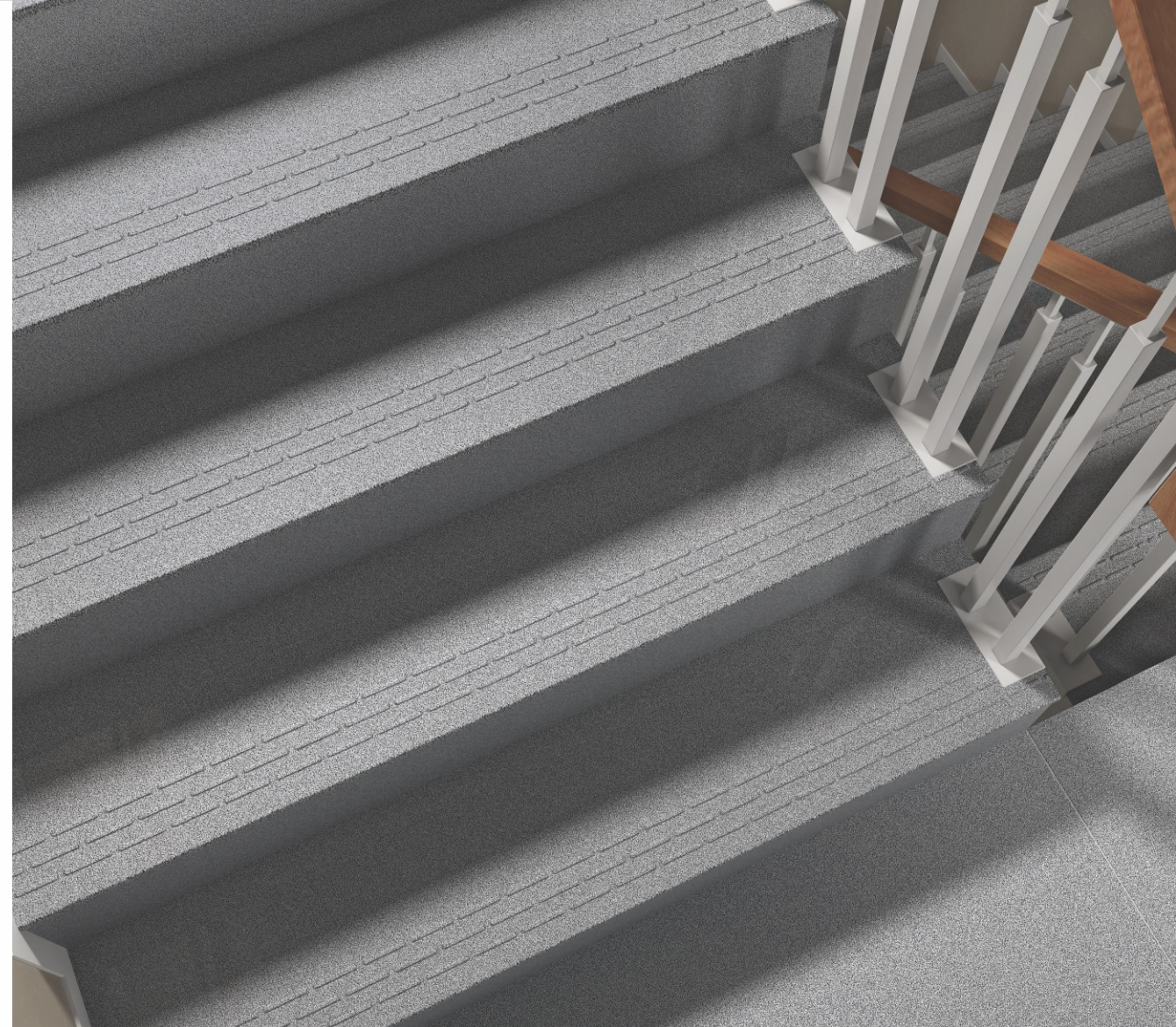


DESERT COAL

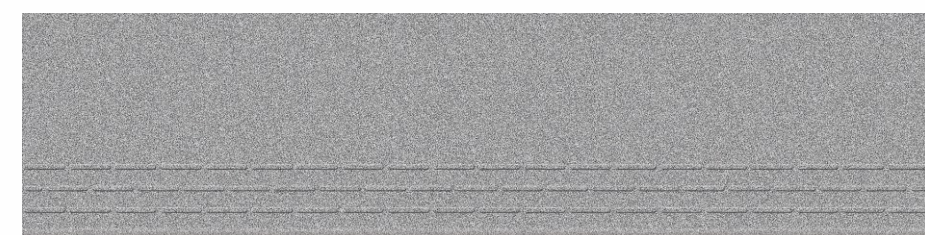




STEP & RISER

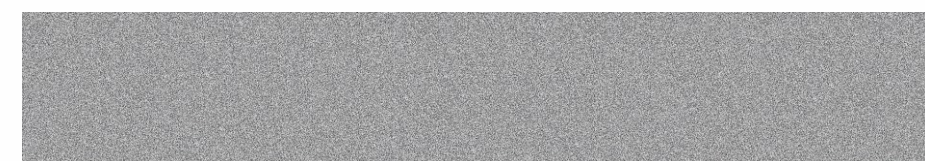


CATEGORY : LIGHT



Step Granite

300x1200mm



Riser Granite

200x1200mm



STEP & RISER

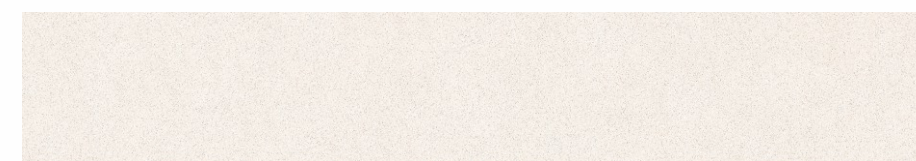


CATEGORY : LIGHT



Step Lux

300x1200mm



Riser Lux

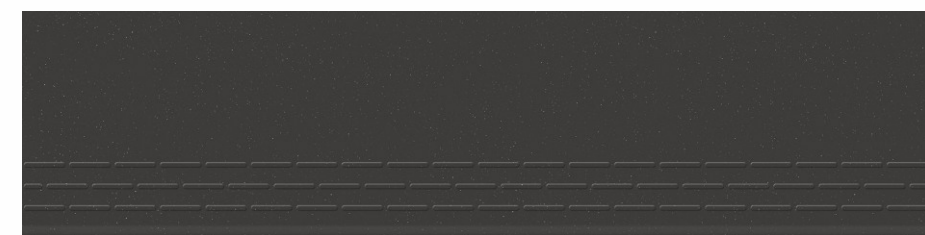
200x1200mm



STEP & RISER

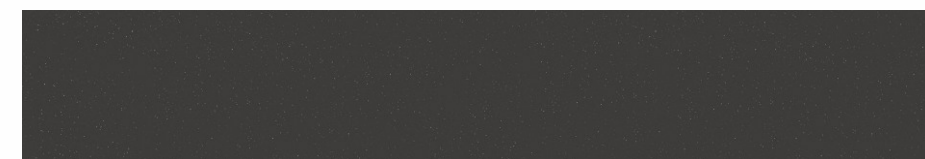


CATEGORY : DARK



**Step Star Black**

300x1200mm



**Riser Star Black**

200x1200mm

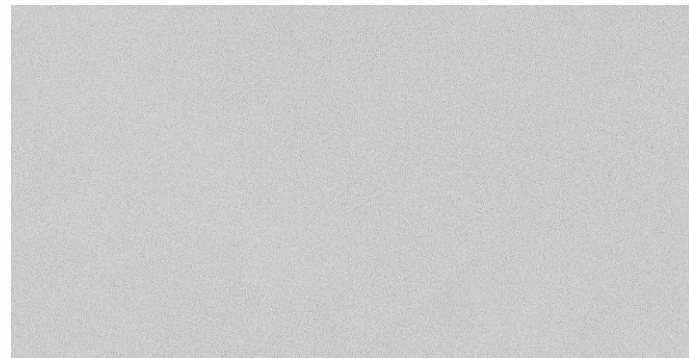
Matching Landing Area Tiles With Steps & Riser  
**300x1200mm | 200x1200mm | 600x1200mm**



**Step Cemento** 300x1200mm



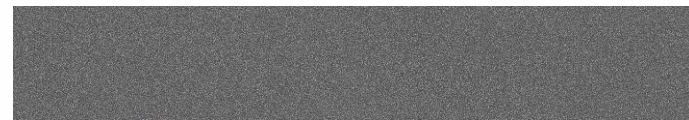
**Riser Cemento** 200x1200mm



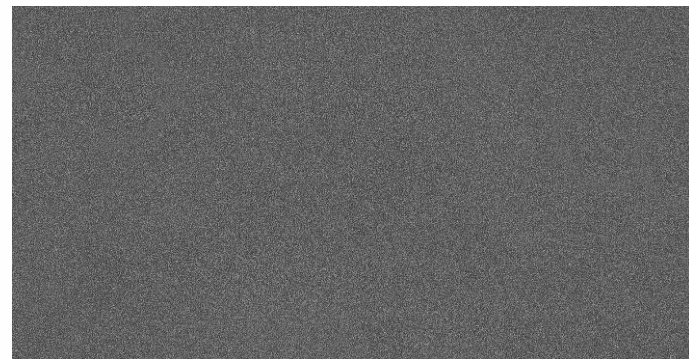
**Desert Cemento** 600x1200mm



**Step Coal** 300x1200mm



**Riser Coal** 200x1200mm



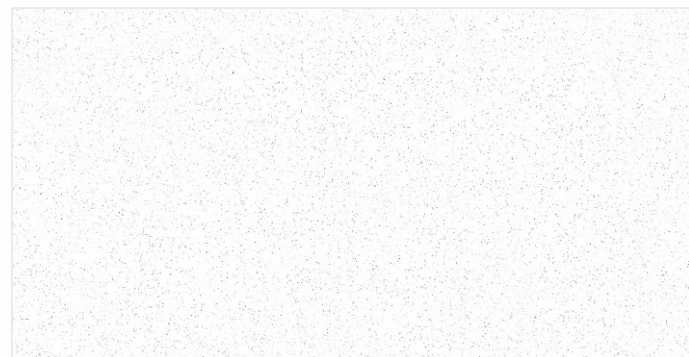
**Desert Coal** 600x1200mm



**Step Gesso** 300x1200mm



**Riser Gesso** 200x1200mm

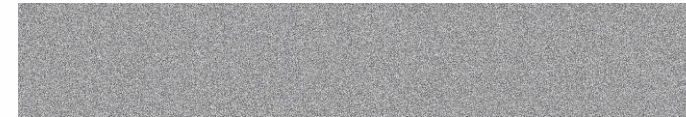


**Desert Gesso** 600x1200mm

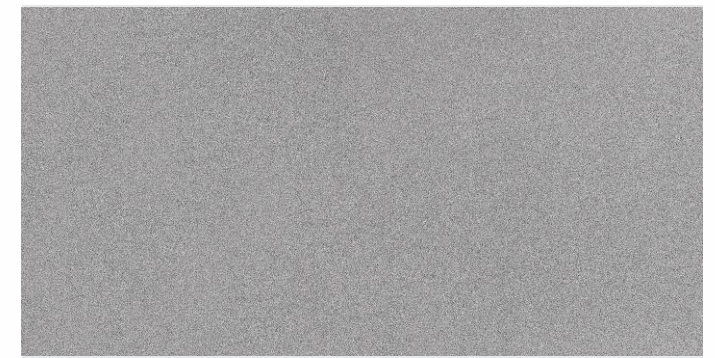
(\*600x1200mm Available in 9mm & 15mm Thickness)



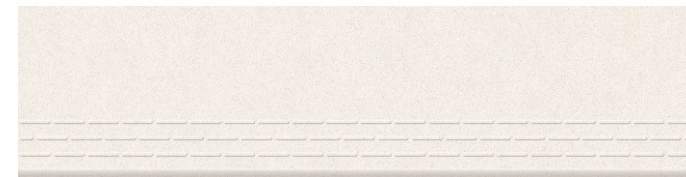
**Step Granite** 300x1200mm



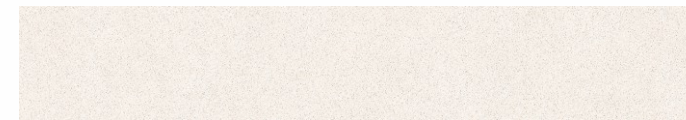
**Riser Granite** 200x1200mm



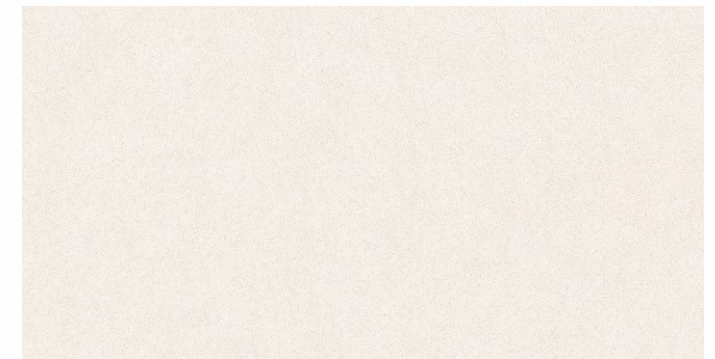
**Desert Granite** 600x1200mm



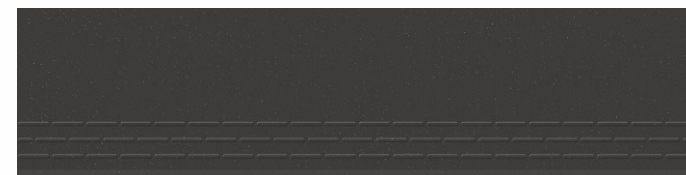
**Step Lux** 300x1200mm



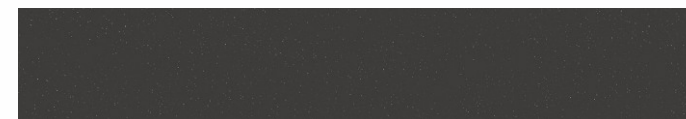
**Riser Lux** 200x1200mm



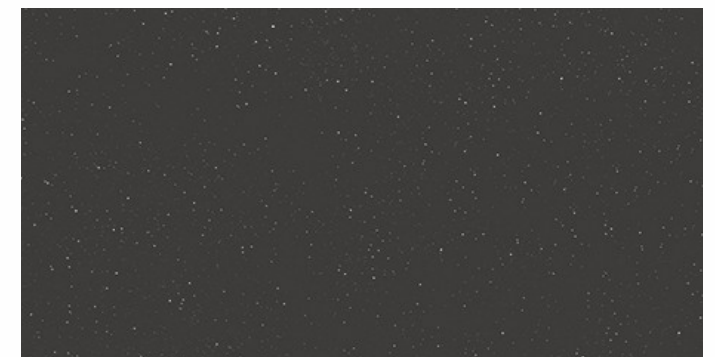
**Desert Lux** 600x1200mm



**Step Star Black** 300x1200mm



**Riser Star Black** 200x1200mm



**Deck Star Black** 600x1200mm

## APPLICATION AREAS



INDOOR



OUTDOOR



SWIMMING POOL



FIRE EXIT



UNIVERSITY



HOSPITAL



SHOPPING MALL

Recommended stair step dimensions  
as per national building code , BIS, SP : 7

Types of Building	Minimum Width	Minimum Thread	Minimum Riser
Residential Buildings	1000mm	250mm	190mm
Residential hotel buildings	1500mm	300mm	150mm
Assembly buildings like auditoriums, theatres and cinemas	2000mm	300mm	150mm
Educational building	1500mm	300mm	150mm
Institutional building	2000mm	300mm	150mm
All other buildings	1500mm	300mm	150mm
2 storeyed - LIC urban areas	600mm	225 mm	200 mm
3 or more storeyed - LIC Urban Areas	750mm	250mm	200mm

**Note:** Straight flights of steps are preferred by ambulant disabled people. Steps should be of a consistent height and depth throughout the staircase. Stairs shall be constructed of non-combustible materials throughout.

## TECHNICAL SPECIFICATION – FULL BODY VITRIFIED TILES

S. NO.	CHARACTERISTIC	INTERNATIONAL STANDARDS GROUP BIA- ISO 13006 ANNEX. G.	MEAN VALUE OF CASA	TEST METHOD
<b>Dimensions &amp; Surface Quality</b>				
1.	Deviation in length and width	± 0.6%	± 0.1%	ISO 10545:2
2.	Deviation in thickness	±5%	± 4%	ISO 10545:2
3.	Deviation in Straightness of sides	± 0.5%	± 0.1%	ISO 10545:2
4.	Deviation in Rectangularity	± 0.6%	± 0.1%	ISO 10545:2
5.	Deviation in Surface Flatness	± 0.5%	± 0.2%	ISO 10545:2
6.	Surface Quality (%)	Minimum 95%	No visible defects	ISO 10545:2
<b>Dimensions &amp; Surface Quality</b>				
7.	Scratch Hardness of surface Moh's scale	Min. 6	Min. 6	ISO 10545:3
8.	Water absorption	≤ 0.5%	≤ 0.05%	ISO 10545:3
9.	Moisture Expansion	Nil	Nil	ISO 10545:10
10.	Surface Abrasion Resistance	max 175mm <sup>®</sup>	≤ 144mm <sup>2</sup>	ISO 10545:7
<b>Dimensions &amp; Surface Quality</b>				
11.	Breaking strength	< 1300 n	< 2200 n	ISO 10545:4
12.	Modulus of rupture	> 35 N/mm <sup>2</sup>	> 35 N/mm <sup>2</sup>	ISO 10545:4
13.	Impact resistance	Declared by manufacturer	no indentation or cracking	ISO 10545:5
<b>Safety characteristics density</b>				
14.	Density	2.20 gm/cc	2.34 gm/cc	DIN 51082
15.	Skid resistance	-	More than R10 (60x60cm x 9.7mm)	DIN 51130
<b>Thermal Photo Characteristics</b>				
16.	Thermal shock resistance	Resistant to 10 cycles	Pass min 10 cycles	ISO 10545:9
17.	Co efficient of thermal expansion	9x10 <sup>-6</sup> K <sup>-1</sup> Max	< 6x10 <sup>-6</sup> K <sup>-1</sup> Max	ISO 10545:8
18.	Frost resistance	Resistant	Resistant	ISO 10545:12
19.	Color Resistance to UV light	Resistant	Resistant	ISO 10545:16
<b>Chemical characteristics characteristics</b>				
20.	Stain Resistance	Resistant	Resistant	ISO 10545:14
21.	Chemical Resistance	min class-UB	Conform to classes-UA	ISO 10545:13
22.	Chemical Resistance	min class-ULB	Conform to classes-U LA	ISO 10545:13
23.	Chemical Resistance	min class-ULB	Conform to classes-UHA	ISO 10545:13

### PACKING DETAILS

S. NO.	DIMENSIONS (mm)	NO. OF TILES/BOX	THICKNESS	WEIGHT PER BOX	COVERAGE AREA PER BOX	
					(SQUARE FOOT)	(SQUARE METER)
1.	200x1200mm	2 Pcs.	15 mm	15.3 kg	5.16 Sq. Ft.	0.48 Sq. Mtr.
2.	300x1200mm	2 Pcs.	15 mm	23.0 kg	7.74 Sq. Ft.	0.72 Sq. Mtr.
3.	600x1200mm	2 Pcs.	15 mm	46.0 kg	15.5 Sq. Ft.	1.44 Sq. Mtr.

\* Vitrified tiles have resistance to most stains/chemicals, but it is recommended to take due care while laying and for day-to-day maintenance.

# Resistance to acids & alkalis  
(Exception Hydrofluoric Acids & its Compounds)

- Colours in the catalog are as accurate as the printing process allows
- Sizes mentioned in the catalog are nominal sizes only.
- Conforming to ISO requirements, technical specifications for Casa tiles are applicable only for 1st quality tiles.
- Please inspect all tiles prior to installation; the company will not entertain complaints once tiles are laid/fixed.
- For better laying, please follow the instructions on the packaging box.

### **Why is Casa Step the new benchmark in the world of staircases?**

Natural stones have been the mainstay of staircases. These stones are not easy to install and are slippery. Moreover, due to a lack of uniformity in size, there is a higher wastage cost. Casa Step is a revolutionary tile that sidesteps all the complications associated with natural stones. Also, the Casa Step comes in a convenient size of 300x1200mm Step with bull nosing and tread lines, 200x1200mm Riser and 600x1200mm Landing area tiles in matching colour. These sizes ensure it meets the design requirements of most staircases.

### **How is Casa Step different from others?**

Safety and durability are the cornerstones of Casa's Step. As a full-bodied Vitrified Tile encompasses a high degree of strength with anti-skid and stain resistant properties, which make it a safe and excellent choice, especially for people with ambulant disabilities.

### **What are the advantages of full bull nose edges?**

Casa Step is a Full Body Bull Nosed, Vitrified Step Tile. The unique bull-nosing makes the staircase safer and more comfortable to step on. It also helps to prevent chipping along edges and gives the staircase an aesthetically pleasing look.

### **What is the purpose of embossed tread lines?**

The embossed tread lines provide extra grip when stepped on, especially near the edges of the steps. This ensures higher safety, preventing people from falling and risking injuries.

### **What are the benefits of thicker tiles?**

For staircases, it makes sense to have strong tiles, which Casa Step is owing to its thickness. It ensures safety, lends confidence, and assures replacement to natural stones.

### **What are the other benefits of using the Casa Step?**

The ease and speed of installation, low water absorption (<0.05%) with advanced stain resistance technology. Also, due to its high abrasion resistance, it provides ten times more surface protection than natural stones.

For more details,  
check our tutorial videos  
on the website and  
on Youtube.



CASASTEP COLLECTION

LAYING ON SCREED



LAYING ON GRASS



LAYING ON GRAVEL



LAYING ON SAND



**A PREMIUM COLLECTION**

**Casastone**  
BOLD SURFACES

  
**CASA  
DESERT**  
FULL BODY TILES

**CASAYARD**  
EXQUISITE PUNCH, INSPIRED BY NATURE

**CASADECK**  
*Heavy Duty Tiles*

**CASA  
POLO**  
FULLBODY TILES

**CASA STEP**  
READY TO INSTALL FULLBODY STEPS

**CasaArt**  
— FULLBODY TILE MOSAIC —

**Casa**   
**Cloud**  
DIGITAL FULLBODY TILES

[CLICK COLLECTION TO OPEN PRODUCT PDF](#)





Casagres Tiles India

Sartanpar Road,  
Opposite 166 Kva Substation,  
Morbi - 363 621, Gujarat, India

[casa@fullbodytiles.com](mailto:casa@fullbodytiles.com)  
[fullbodytiles.com](http://fullbodytiles.com)

Copyright 2023 By Casagres Tiles India  
(designed By: Sipl) June 2023