

HOUSE OF

FULL BODY TILES

600x600mm | 600x1200mm

Casa
FULL BODY TILES

Full Body Tile Book 2023

Catalog



As part of its product development policy, Casa reserves the right to modify at any time and without prior notice, any of the design and colors described in this document; Casa therefore does not guarantee the availability of those products nor does it ensure that the specifications, colours, shapes and other reproduced features are identical to the real ones. The displayed settings are merely decorative, and no technical requirements have been taken into consideration while composing them. Casa reserves the right to delete any article from the catalogue at any time. Total or partial reproduction of the content of this publication without Casa's express authorisation is prohibited

Table of contents

About Casa Tile India 04	New Colors On Demand 38
Concept 05	
Full Body 06	Installation System 63
Unique Features 07	Certification 69
Sizes & Surface 08	Technical Specification 70
Works 09	Tile Cleaning 70
Application 10	Installation Video 71
User Guide 11	Casa Collection 71
Hybrid + Technology 12	
Meta Surface 13	
Collective Creation 14	
Product Range 15	
Style Index & Category 16	

About Casa Tile India



Over 32+ years of history to become a worldwide leader in tile manufacturing.

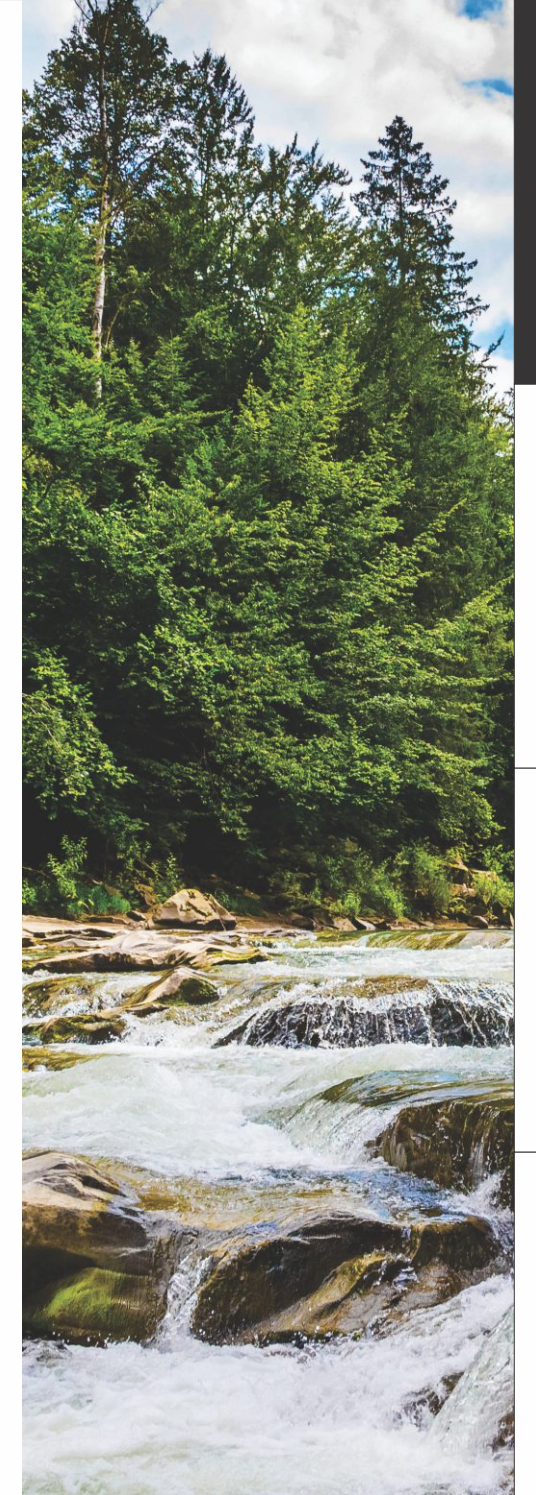
Casa Tile has been growing in the past decades adding showrooms and distribution centres in strategic locations to provide nationwide service. Today, Casa Tile is part of a worldwide leader in manufacturing, distributing and marketing of high-quality full body tiles and technical porcelain tiles. Driven by its strong quality focus and innovative spirit with simplicity. The company has been one of the market leader in ceramics. Today casa tiles is one of the largest manufacturer of full body vitrified tiles.

The Company's offer wide product range of solutions for multiple uses, from versatile floor tile to highly resistant indoor and outdoor floor tiles, which come in a wide range of colors and textures to complement Every space in your home from market trend to classic look to choose for residential and commercial use.

At Casa, our commitment to the environment goes beyond compliance with the regulations in force, taking measures in accordance with the circular economy to reduce our impact on the environment, with the reduction of material consumption and the reuse and recycling

All Casa products can help you obtain a better score in the Green Sustainability, the most widely used Green Building Certification for sustainable buildings, so that our tiles contribute to the improvement of the environmental characteristics and facilitate the sustainability certification of the buildings where they are employed.

We apply rigorous continuous improvement and sustainable criteria programs at all phases of our production processes, which are reviewed externally on a regular basis with the Integrated Environmental Authorisation (AAI), ISO 14001, ISO 9001, IMC, CE, REX, TRS certifications; as a guarantee of quality and environmental compliance of our floor and wall tiles.



INDEX

RANGE

BASIC

PLUS

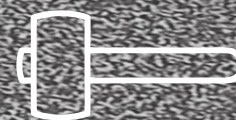
SUPER PLUS

TECH. DATA

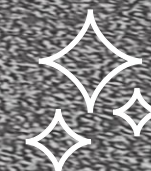


HERITAGE, ART, INNOVATIVE, DESIGN.

*Full Body Tiles by Casa
is dedicated to this
extraordinary place,
which for 200 years
has combined the
art of the past with
teaching for the future.*



Solid



Safe,
Clean,
fireproof



Highly
sustainable

STRONG HOMOGENEOUS FULL BODY

A material that is homogeneous throughout. A solid material which makes no distinction between outer surface and core, made with interpenetrating mixes of different colors.

FULLBODY UNIQUE FEATURES



A

Only minerals

Only natural raw materials and minerals. Not a reproduction, but a full-body authentic material.

B

Multicolor Chips and Grains

An unrivalled variety of coloured slivers and grains, obtained exclusively from natural raw materials.

C

True Random Effect

Each tile is unique, and not two are ever the same. An attractive, random blend of multi-coloured slivers and grains.

D

Highest pressure and fire.

A uniform body, indestructible and non-absorbent. Compacted at extremely high pressure and baked at 1200° C.

CASA FULL BODY
SURFACE



← Smooth Polished

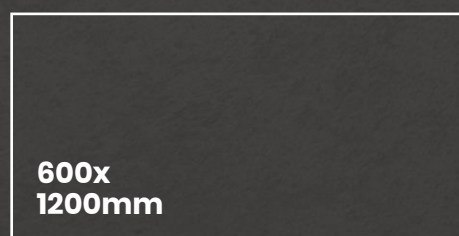
Soft →

Soft + META SURFACES

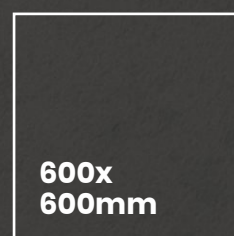
Antibacterial, Antiviral,
Hybrid+ Technology

Structured →

SIZES :

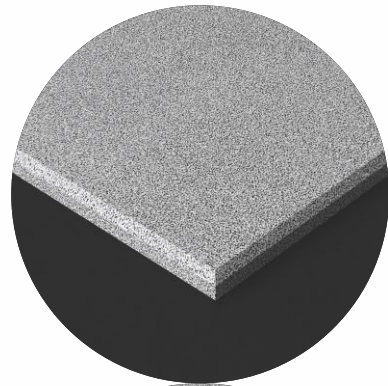


9MM
THICKNESS

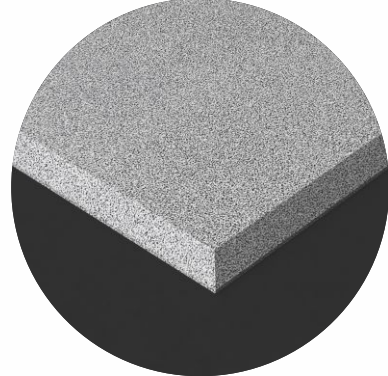


WORKS

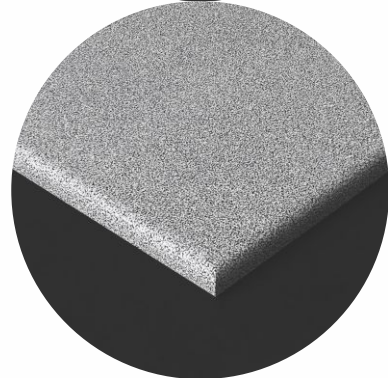
Process with visible thickness.



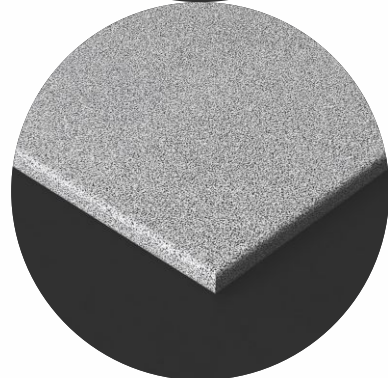
Squared straight edge.



Squared 45° edge



Bullnose



Rounded double straight edge



Applications



RESIDENTIAL



GARDEN & POOL



HOTELS



OFFICE



RESTAURANT



SHOPS



MALLS



PUBLIC SPACES



AIRPORTS

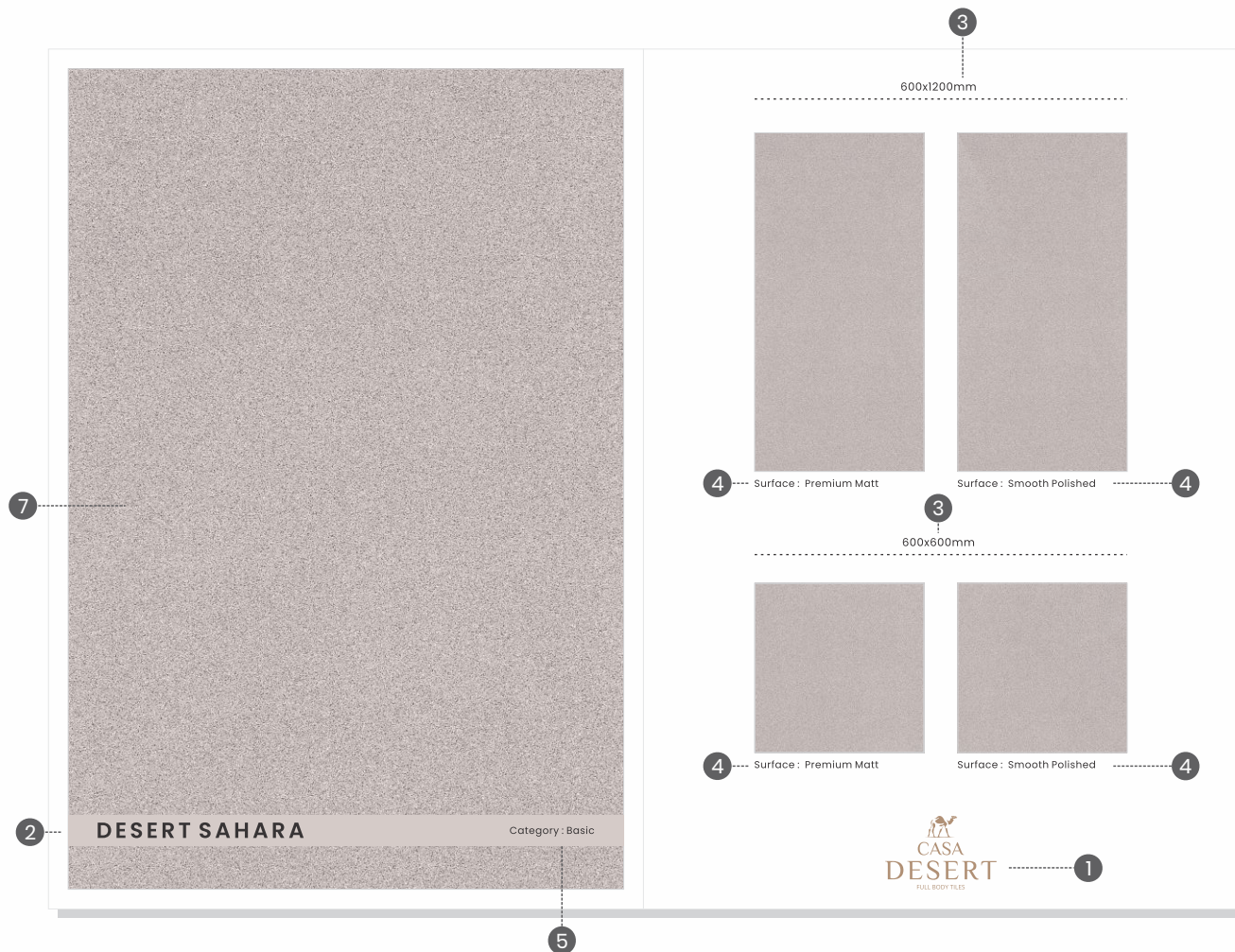
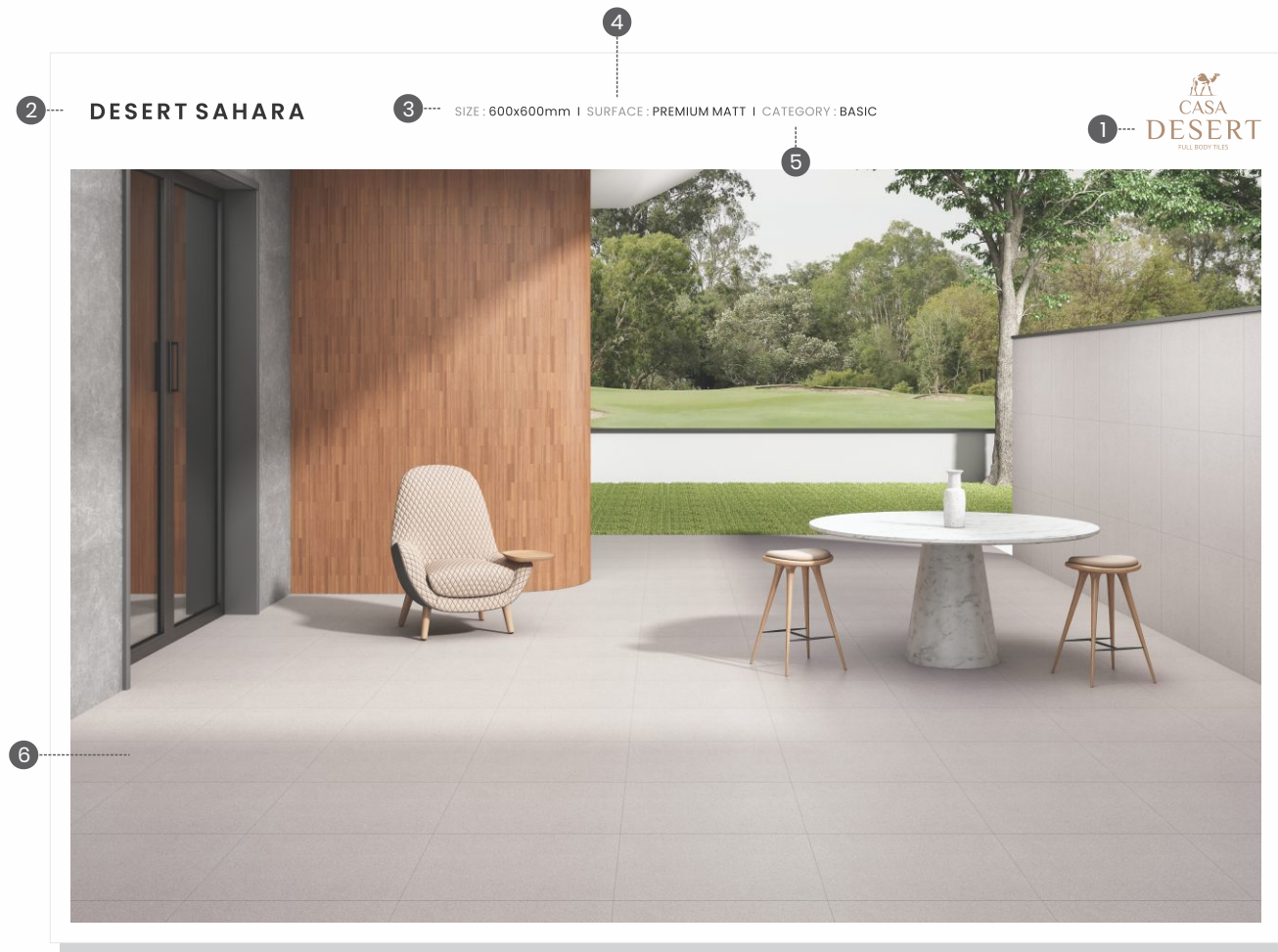


TRAIN STATION

CASA TILE is
the technical solution
for every design situation
whether indoor or
outdoor

FULL BODY

USER GUIDE



Product type

Full Body Technical Porcelain Stoneware

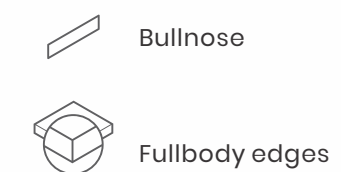
A product of the most advanced innovation and technology, this Full Body is completely vitrified and Homogeneous through its mass. Versatile in its aesthetics and performance, this product offers finest superior properties in resistance and hygiene.

- 1 Collection name
- 2 Design name
- 3 Available size
- 4 Surface
- 5 Category
- 6 Product Imagination
- 7 Product Image

Types of application



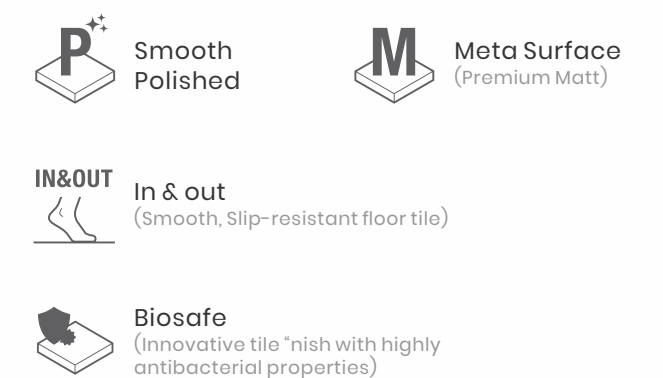
Characteristics



Recycled content

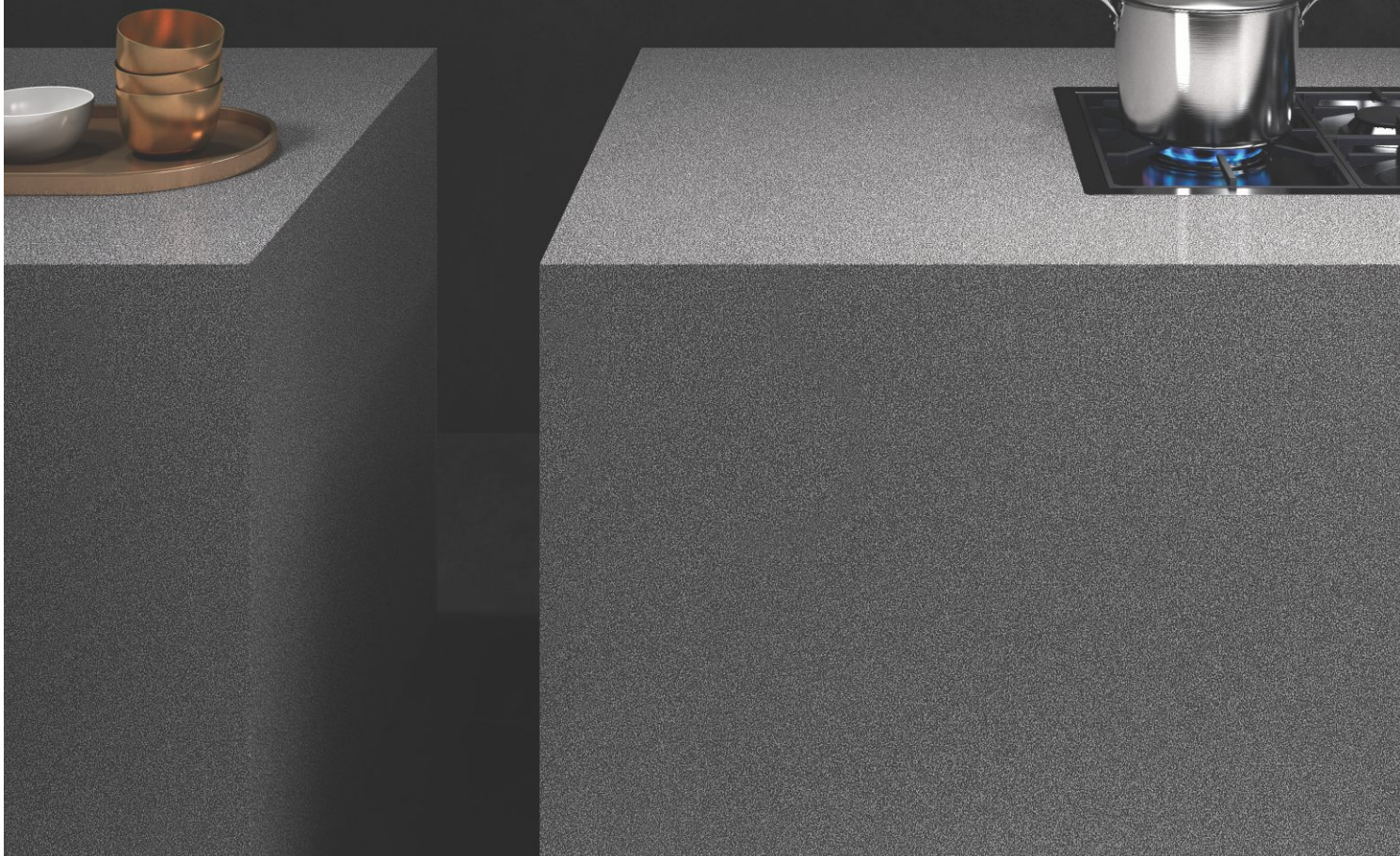
 Made with a minimum of 70% recycled pre-consumer material, rejected technical tiles and may contribute to obtain GREEN Sustainability.

Finish



HYBRID+
TECHNOLOGY

**FULL BODY
SKID RESISTANT
GERM FREE**



Protect
ANTIBATTERICO - ANTIMICROBIAL

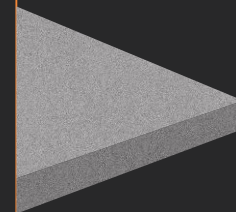
No Germs & Fungus, Less Health Issues | Get Rid of the Odours
Various Applications | Improves Quality of Life

Casa Fullbody Tiles Collections comes with protect antibacterial hybrid+ technology. These Vitrified matt tiles is an innovative product made from finest ingredients with anti microbial treatment that inhibits growth of germs like bacteria and fungus.

This full body product with skid resistant property can be safely used in hospitals, schools, residential areas, offices or any other commercial spaces, where longevity and hygiene is paramount.

FULL BODY

These tiles are ideal for zones with heavy footfall because even after extended use, their colour remains the same.



SKID RESISTANT

A versatile surface with skid resistant property makes these tiles perfect for zero slippage on slopes of upto 25°.



GERM FREE (99.9%)

A specially formulated anti-microbial application used during the manufacturing process enables these tiles to prevent habitation of germs like bacteria and fungus, making them an ideal choice for today's health-conscious consumers.



SCRATCH RESISTANT
STAIN RESISTANT



Confidently Smooth, Comfortably Stylish.

As smooth as the breezing wind, 'Meta Surface' is yet another achievement for us. The exceptional surface is achieved with the exclusive and patented Italian technology, which is the first of its kind in India. It takes the surface quality to where no other technology can reach.

With this innovation, we have overcome the myth that smooth surfaces get scratches and stains. Despite having the unmatched smoothness, 'Meta Surface' is resistant to scratches.

HOUSE OF **FULL BODY** VITRIFIED TILES.

Collective Creation

We believe in next-gen classics and not temporary whims. Therefore, we bring you an idea that is a true lifestyle in itself – Casa FULL BODY TILES. The full body tiles come in the size 60x120cm and are designed to meet the latest architecture and interior designer needs. They are designed using natural raw materials that are sustainable enough and long-lasting. The different installation possibilities allow the material to blend in with its surrounding landscape.

Modern concepts develop in a huge range of finishes, textures, and colors to suit every taste. The products are curated to make people happy, embrace comfort and seek personal identity. One can feel the joy of living in a home with the CASA FULL BODY TILES.

A PREMIUM COLLECTION

Casastone
BOLD SURFACES

CASAYARD
EXQUISITE PUNCH, INSPIRED BY NATURE

**CASA
POLO**
FULLBODY TILES

CasaArt
FULLBODY TILE MOSAIC

**CASA
DESERT**
FULL BODY TILES

CASA STEP
READY TO INSTALL FULLBODY STEPS

CASADECK
Heavy Duty Tiles



600x1200mm



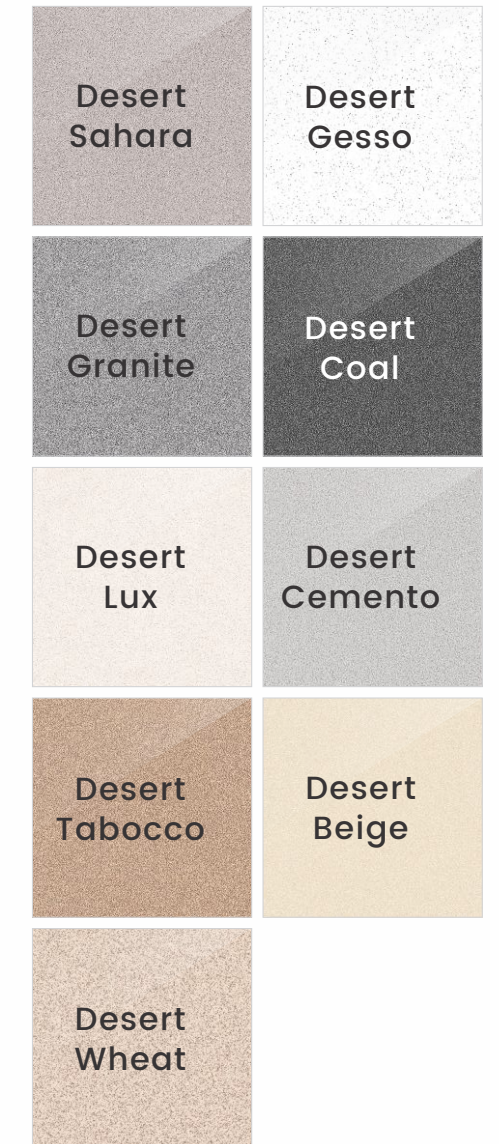
SURFACE : PREMIUM MATT
TYPE : SALT & PEPPER

600x600mm



SURFACE : SMOOTH POLISHED
TYPE : SALT & PEPPER

600x600mm



Style Index and Category

Casa Desert, an extraordinary homogeneous surface that is a unique delight for interiors and architects. The collection gives creative freedom to experiment, play around with their thoughts and ideas in an innovative way.

Our Natural Granite base range of design and colours, offers architects and interiors a rich palette for creating inspired structures that adds luxury and elegance to your space.

Casa full body tiles are characterized by soft solid colours and natural granite base with a surface of premium matt and smooth polished, is available in 60x60cm & 60x120cm size.

Basic

- Desert sahara
- Desert ginger
- Desert granite
- Desert lux
- Desert beige
- Desert cemento
- Desert wheat

Plus

- Desert camel
- Desert tobacco

Super Plus

- Desert coal
- Desert gesso
- Desert bronze





**CASADESERT
BASIC COLOR RANGE**

INDEX

RANGE

BASIC

PLUS

SUPER PLUS

TECH. DATA



INDEX

RANGE

BASIC

PLUS

SUPER PLUS

TECH. DATA

DESERT SAHARA

SIZE : 600x1200mm | SURFACE : PREMIUM MATT | CATEGORY : BASIC



SIZE : 600x1200mm | SURFACE : SMOOTH POLISHED | CATEGORY : BASIC



SIZE : 600x600mm | SURFACE : SMOOTH POLISHED | CATEGORY : BASIC

INDEX

RANGE

BASIC

PLUS

SUPER PLUS

TECH. DATA

DESERT SAHARA

SIZE : 600x600mm | SURFACE : PREMIUM MATT | CATEGORY : BASIC


**CASA
DESERT**
FULL BODY TILES



INDEX

RANGE

BASIC

PLUS

SUPER PLUS

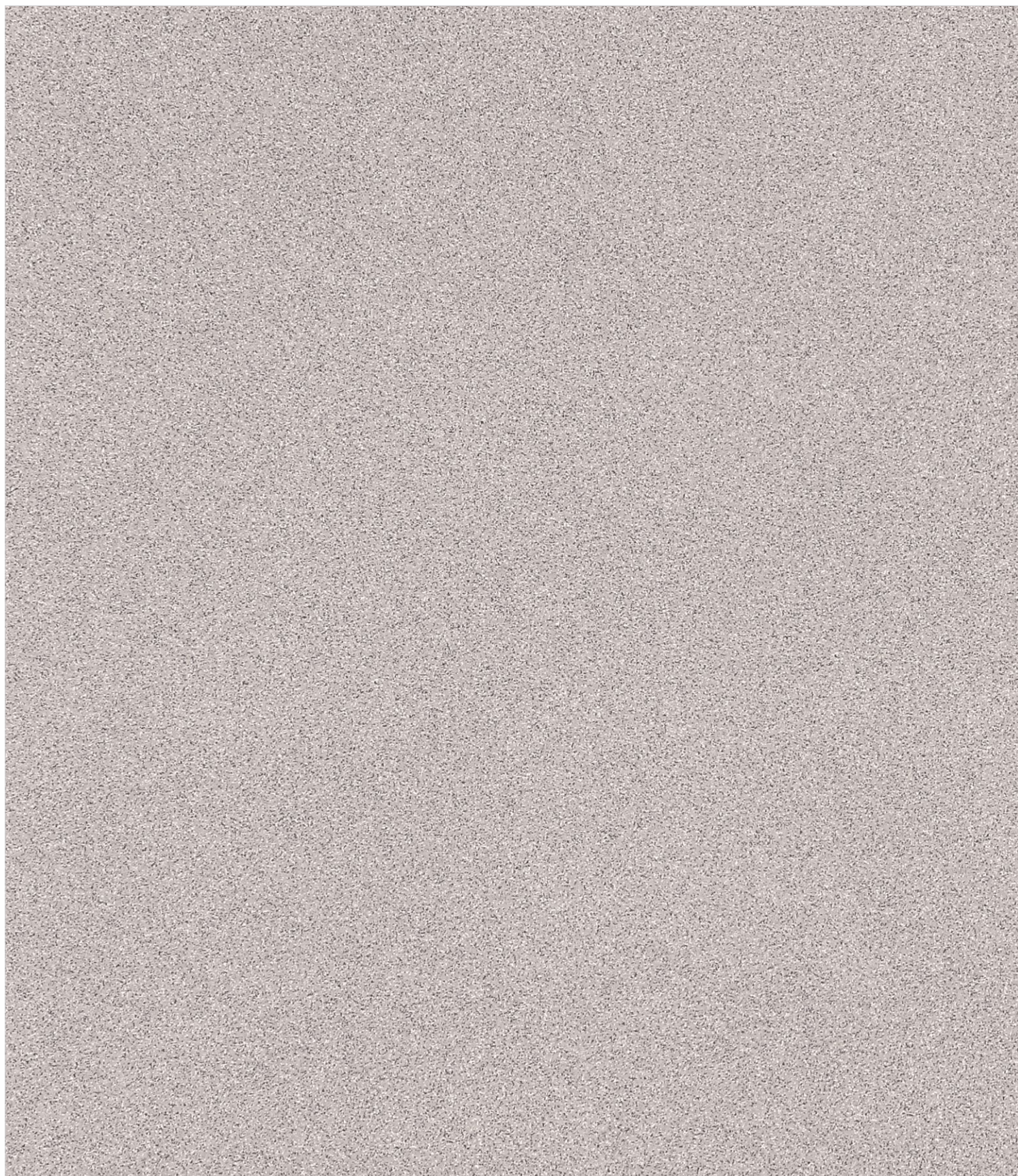
TECH. DATA

DESERT SAHARA

CLICK HERE

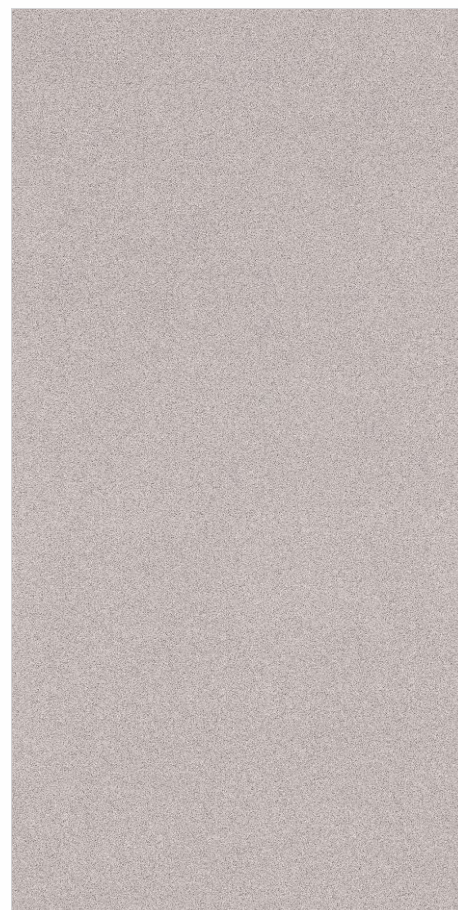


For
360°
VISUAL

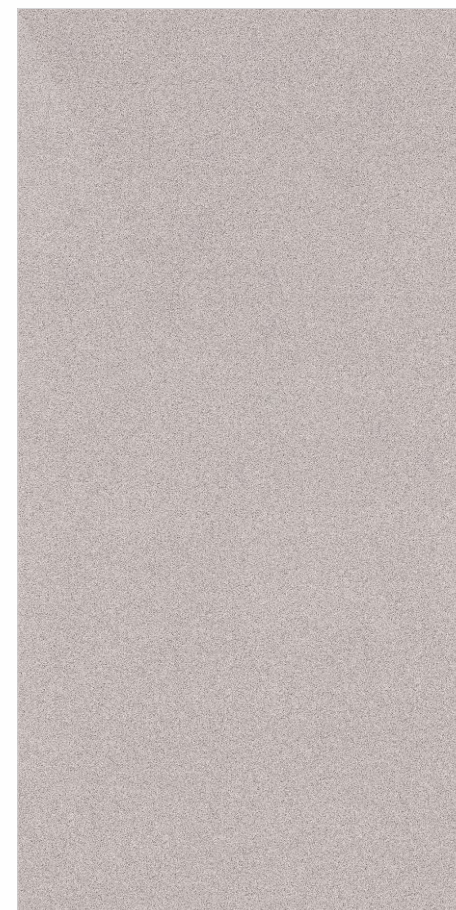


Category : Basic

600x1200mm

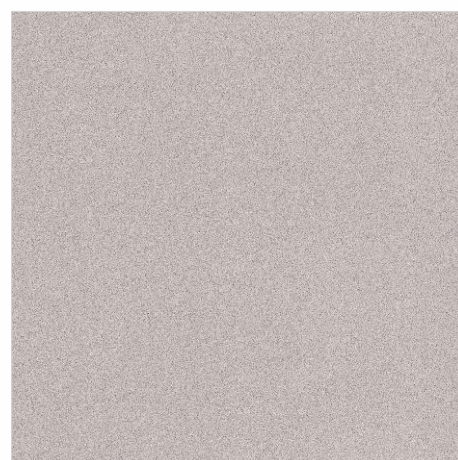


Surface : Premium Matt

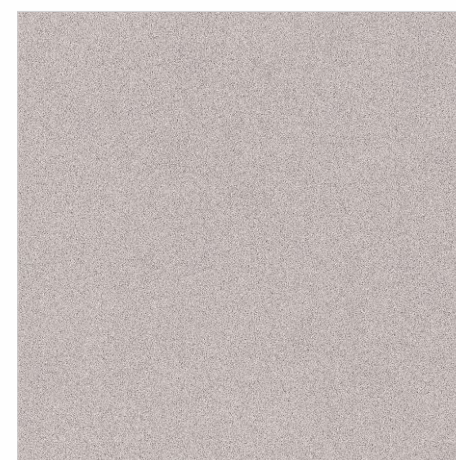


Surface : Smooth Polished

600x600mm



Surface : Premium Matt



Surface : Smooth Polished



DESERT CEMENTO

SIZE : 600x1200mm | SURFACE : PREMIUM MATT | CATEGORY : BASIC



INDEX

RANGE

BASIC

PLUS

SUPER PLUS

TECH. DATA

SIZE : 600x1200mm | SURFACE : SMOOTH POLISHED | CATEGORY : BASIC



SIZE : 600x600mm | SURFACE : SMOOTH POLISHED | CATEGORY : BASIC

INDEX

RANGE

BASIC

PLUS

SUPER PLUS

TECH. DATA

DESERT CEMENTO

SIZE : 600x600mm | SURFACE : PREMIUM MATT | CATEGORY : BASIC


**CASA
DESERT**
FULL BODY TILES



INDEX

RANGE

BASIC

PLUS

SUPER PLUS

TECH. DATA

DESERT CEMENTO

CLICK HERE



For
360°
VISUAL



Category : Basic

600x1200mm

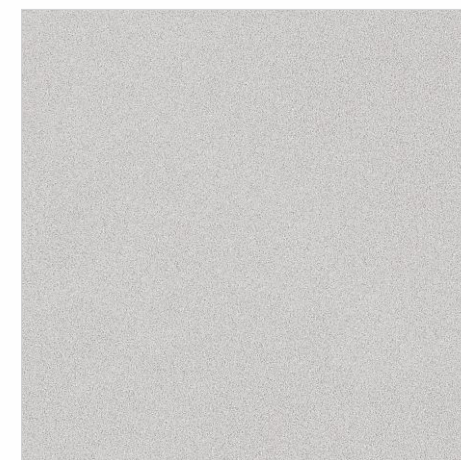


Surface : Premium Matt



Surface : Smooth Polished

600x600mm



Surface : Premium Matt



Surface : Smooth Polished



INDEX

RANGE

BASIC

PLUS

SUPER PLUS

TECH. DATA



INDEX

RANGE

BASIC

PLUS

SUPER PLUS

TECH. DATA

DESERT GRANITE

SIZE : 600x1200mm | SURFACE : PREMIUM MATT | CATEGORY : BASIC



SIZE : 600x1200mm | SURFACE : SMOOTH POLISHED | CATEGORY : BASIC



SIZE : 600x600mm | SURFACE : SMOOTH POLISHED | CATEGORY : BASIC

INDEX

RANGE

BASIC

PLUS

SUPER PLUS

TECH. DATA

DESERT GRANITE

SIZE : 600x600mm | SURFACE : PREMIUM MATT | CATEGORY : BASIC



INDEX

RANGE

BASIC

PLUS

SUPER PLUS

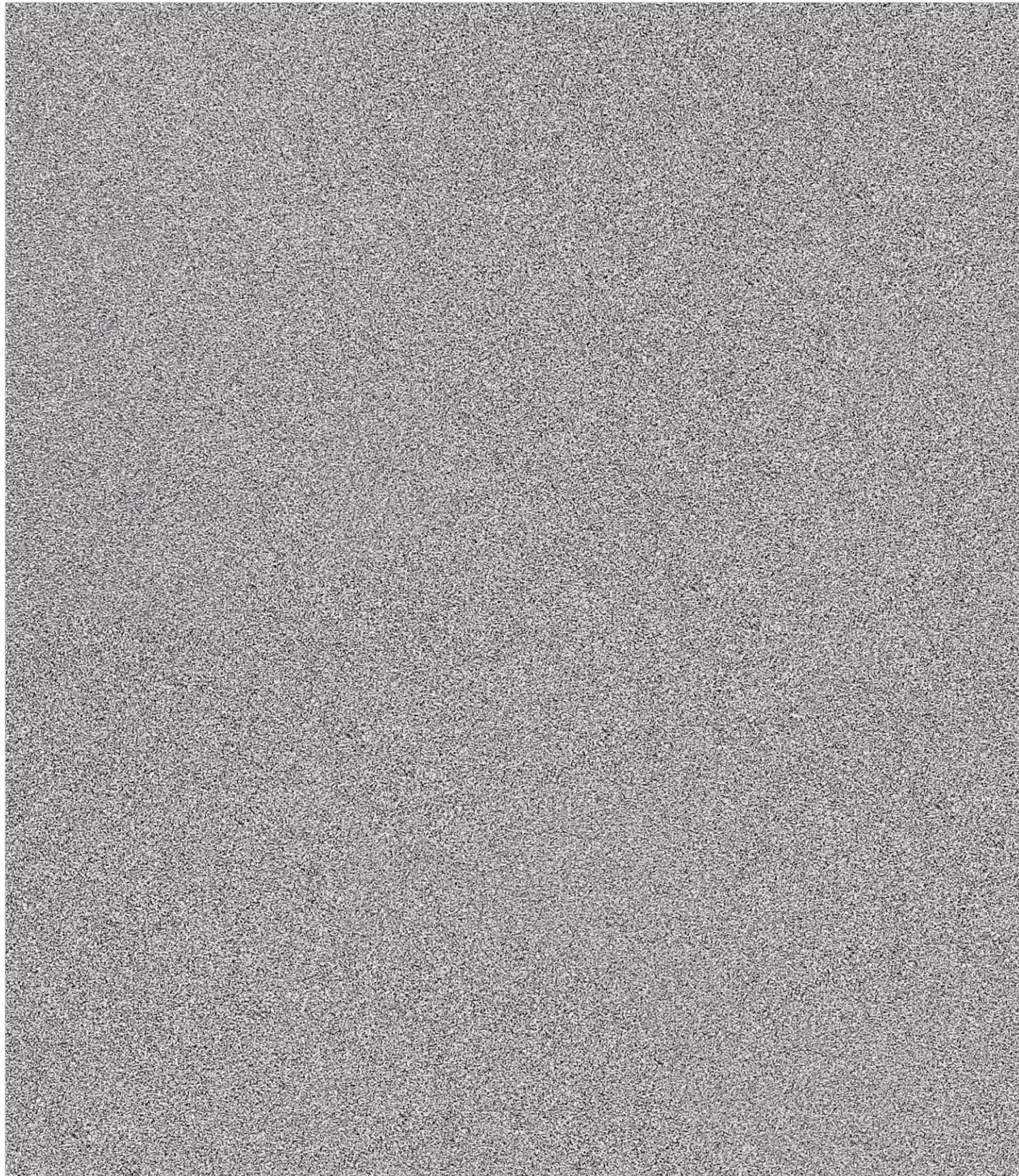
TECH. DATA

DESERT GRANITE

CLICK HERE

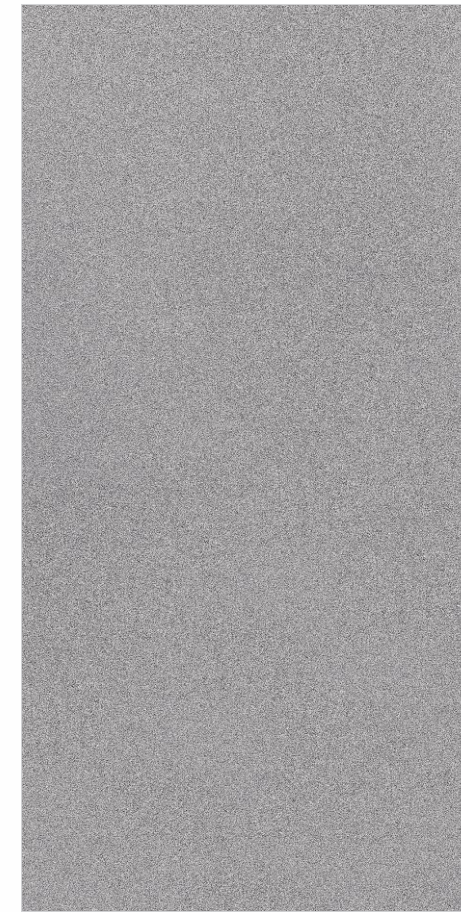


For
360°
VISUAL



Category : Basic

600x1200mm

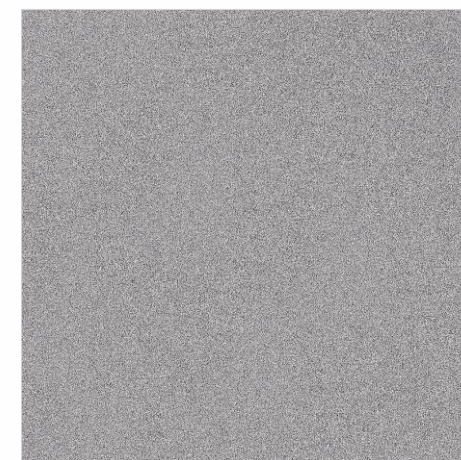


Surface : Premium Matt

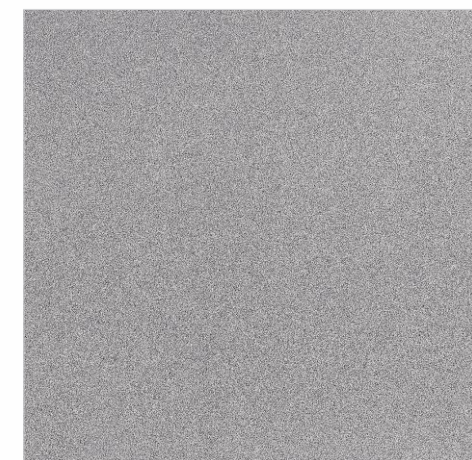


Surface : Smooth Polished

600x600mm



Surface : Premium Matt



Surface : Smooth Polished



DESERT LUX

SIZE : 600x1200mm | SURFACE : PREMIUM MATT | CATEGORY : BASIC


**CASA
DESERT**
FULL BODY TILES

INDEX

RANGE

BASIC

PLUS

SUPER PLUS

TECH. DATA

SIZE : 600x1200mm | SURFACE : SMOOTH POLISHED | CATEGORY : BASIC



SIZE : 600x600mm | SURFACE : SMOOTH POLISHED | CATEGORY : BASIC

INDEX

RANGE

BASIC

PLUS

SUPER PLUS

TECH. DATA

DESERT LUX

SIZE : 600x600mm | SURFACE : PREMIUM MATT | CATEGORY : BASIC


**CASA
DESERT**
FULL BODY TILES



INDEX

RANGE

BASIC

PLUS

SUPER PLUS

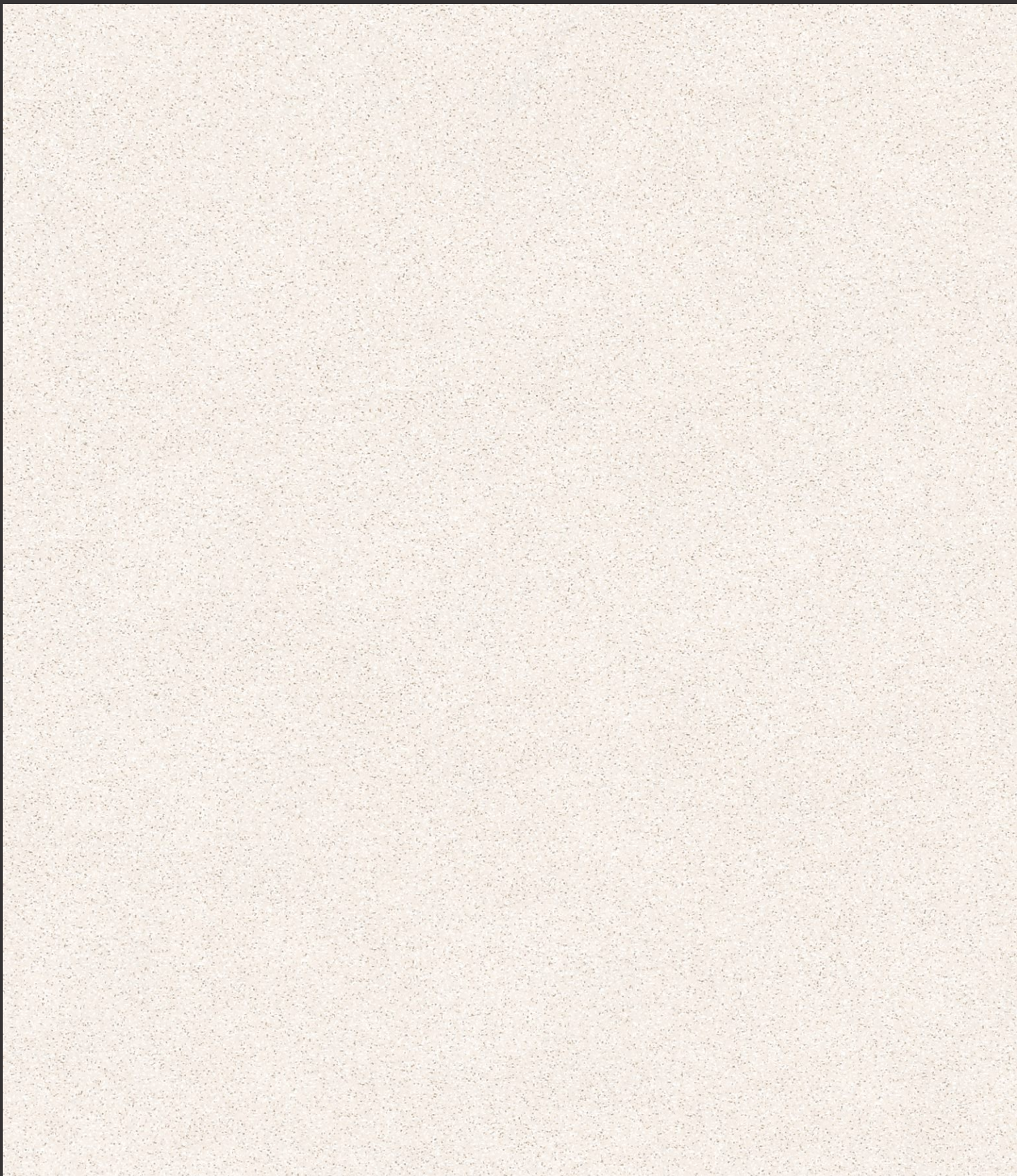
TECH. DATA

DESERT LUX

CLICK HERE

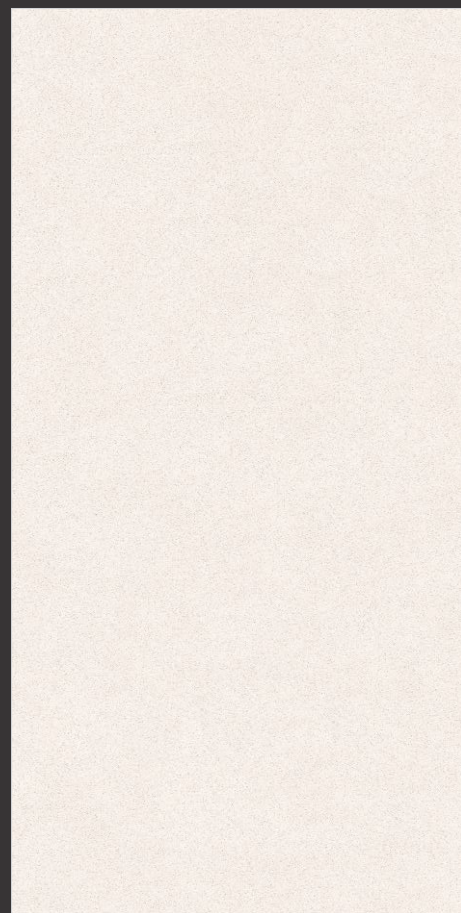


For
360°
VISUAL

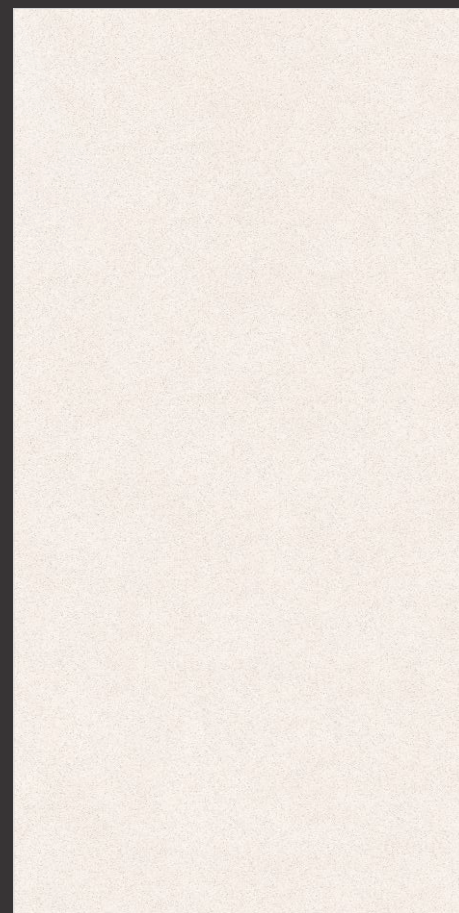


Category : Basic

600x1200mm

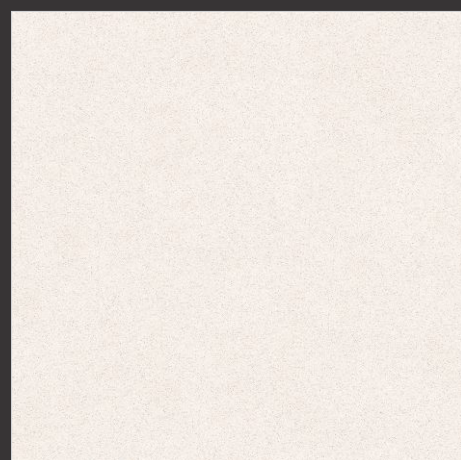


Surface : Premium Matt

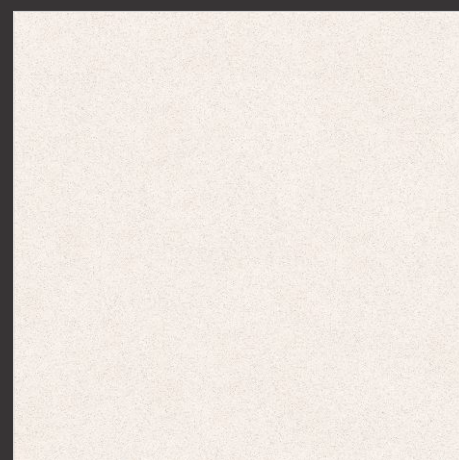


Surface : Smooth Polished

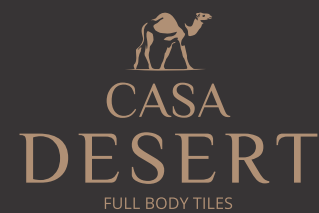
600x600mm



Surface : Premium Matt



Surface : Smooth Polished



INDEX

RANGE

BASIC

PLUS

SUPER PLUS

TECH. DATA



DESERT BEIGE

SIZE : 600x1200mm | SURFACE : PREMIUM MATT | CATEGORY : BASIC


**CASA
DESERT**
FULL BODY TILES

INDEX

RANGE

BASIC

PLUS

SUPER PLUS

TECH. DATA

SIZE : 600x1200mm | SURFACE : SMOOTH POLISHED | CATEGORY : BASIC



SIZE : 600x600mm | SURFACE : SMOOTH POLISHED | CATEGORY : BASIC

INDEX

RANGE

BASIC

PLUS

SUPER PLUS

TECH. DATA

DESERT BEIGE

SIZE : 600x600mm | SURFACE : PREMIUM MATT | CATEGORY : BASIC



INDEX

RANGE

BASIC

PLUS

SUPER PLUS

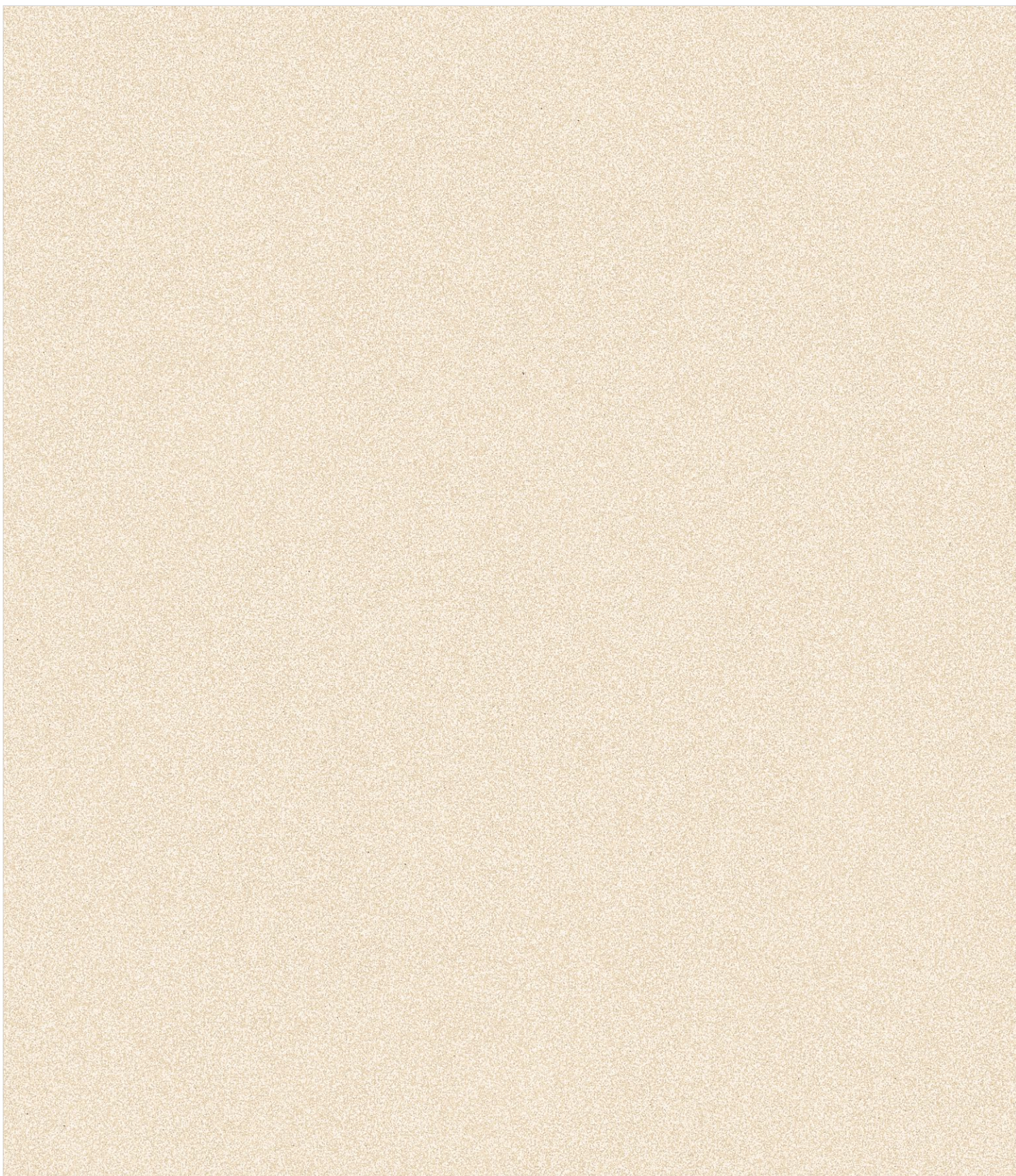
TECH. DATA

DESERT BEIGE

CLICK HERE

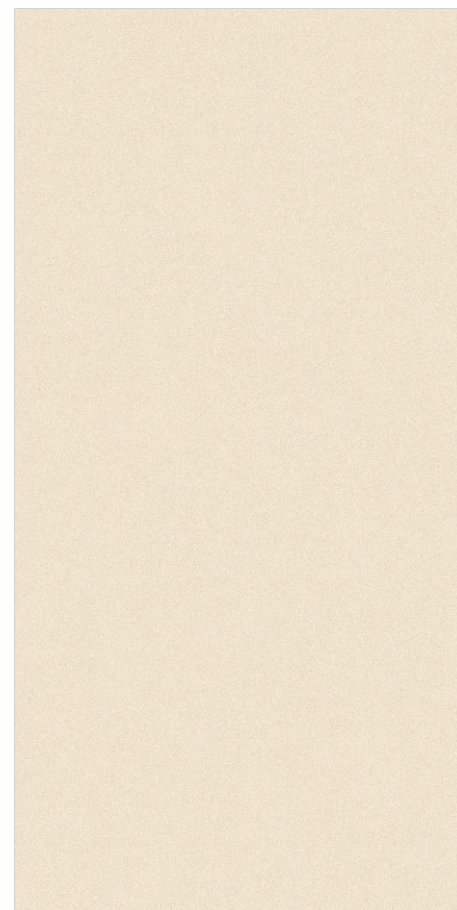


For
360°
VISUAL

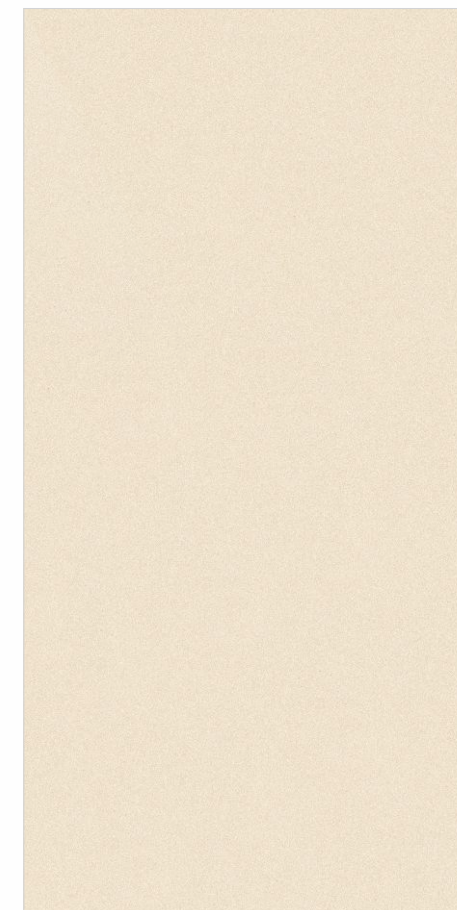


Category : Basic

600x1200mm

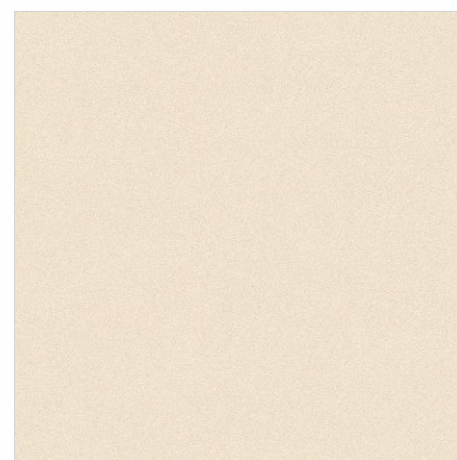


Surface : Premium Matt

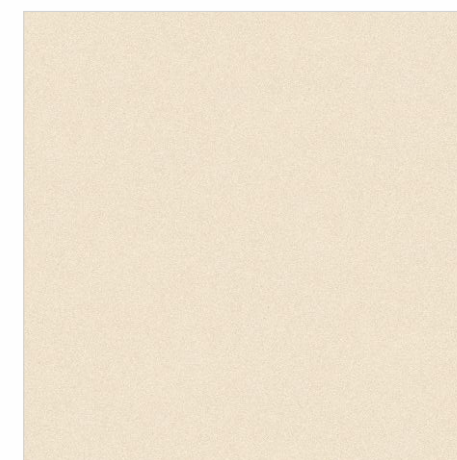


Surface : Smooth Polished

600x600mm



Surface : Premium Matt



Surface : Smooth Polished



DESERT GINGER

SIZE : 600x1200mm | SURFACE : PREMIUM MATT | CATEGORY : BASIC



INDEX

RANGE

BASIC

PLUS

SUPER PLUS

TECH. DATA

DESERT GINGER

SIZE : 600x1200mm | SURFACE : SMOOTH POLISHED | CATEGORY : BASIC



DESERT GINGER

CLICK HERE



For
360°
VISUAL



Category : Basic

600x1200mm

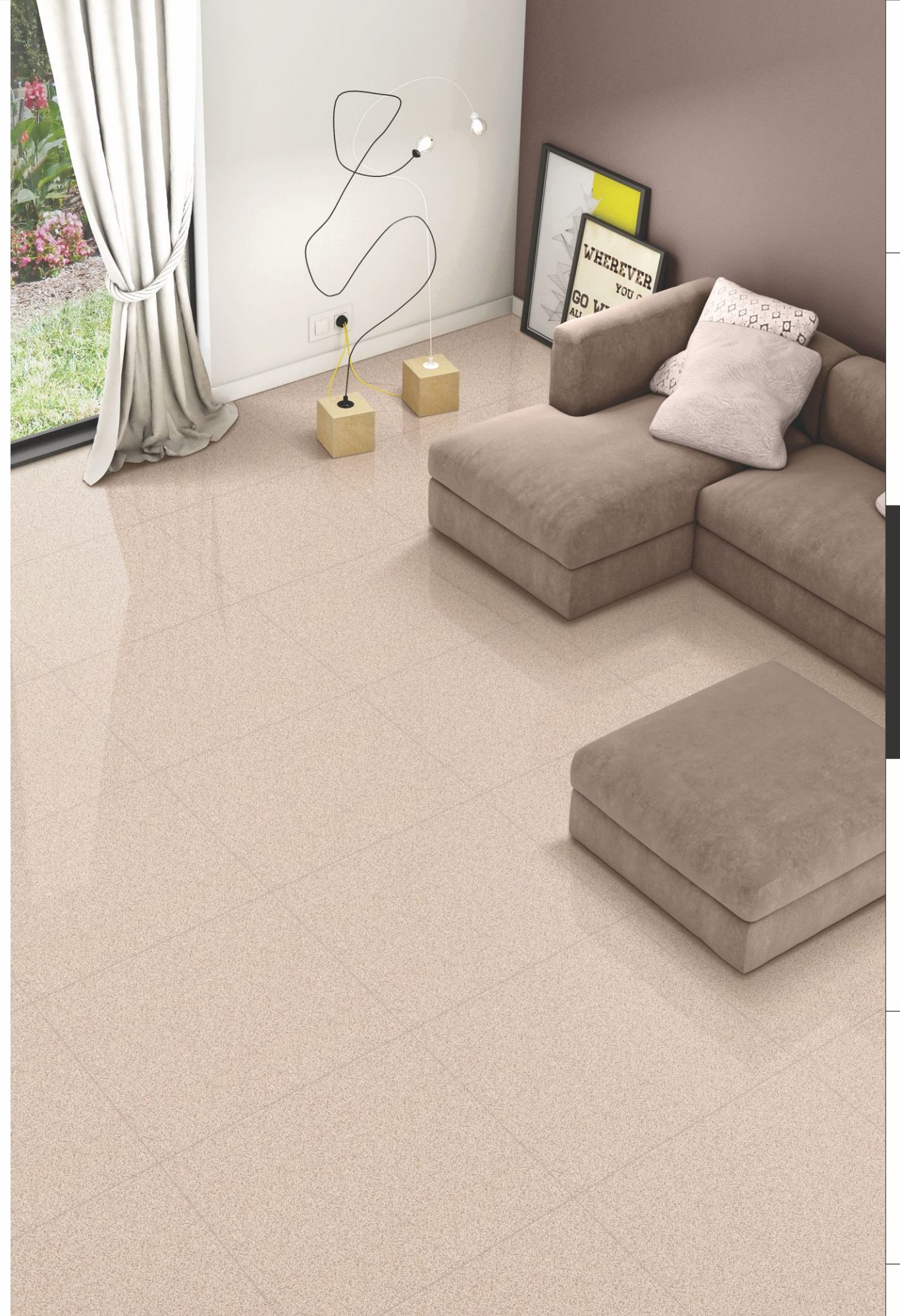


Surface : Premium Matt



Surface : Smooth Polished

SIZE : 600x600mm | SURFACE : PREMIUM MATT | CATEGORY : BASIC



SIZE : 600x600mm | SURFACE : SMOOTH POLISHED | CATEGORY : BASIC

INDEX

RANGE

BASIC

PLUS

SUPER PLUS

TECH. DATA

DESERT WHEAT

CLICK HERE



For
360°
VISUAL



Category : Basic

600x600mm



Surface : Premium Matt



Surface : Smooth Polished



CASADESERT PLUS COLOR RANGE



INDEX

RANGE

BASIC

PLUS

SUPER PLUS

TECH. DATA

DESERT TOBACCO

SIZE : 600x1200mm | SURFACE : PREMIUM MATT | CATEGORY : PLUS


**CASA
DESERT**
FULL BODY TILES

SIZE : 600x1200mm | SURFACE : SMOOTH POLISHED | CATEGORY : PLUS



SIZE : 600x600mm | SURFACE : SMOOTH POLISHED | CATEGORY : PLUS

INDEX

RANGE

BASIC

PLUS

SUPER PLUS

TECH. DATA

DESERT TOBACCO

SIZE : 600x600mm | SURFACE : PREMIUM MATT | CATEGORY : PLUS


**CASA
DESERT**
FULL BODY TILES



INDEX

RANGE

BASIC

PLUS

SUPER PLUS

TECH. DATA

DESERT TOBACCO

CLICK HERE



For
360°
VISUAL



Category : Plus

600x1200mm



Surface : Premium Matt



Surface : Smooth Polished

600x600mm



Surface : Premium Matt



Surface : Smooth Polished



DESERT CAMEL

SIZE : 600x1200mm | SURFACE : PREMIUM MATT | CATEGORY : PLUS



INDEX

RANGE

BASIC

PLUS

SUPER PLUS

TECH. DATA

DESERT CAMEL

SIZE : 600x1200mm | SURFACE : SMOOTH POLISHED | CATEGORY : PLUS


**CASA
DESERT**
FULL BODY TILES



INDEX

RANGE

BASIC

PLUS

SUPER PLUS

TECH. DATA

DESERT CAMEL

CLICK HERE



For
360°
VISUAL



Category : Plus

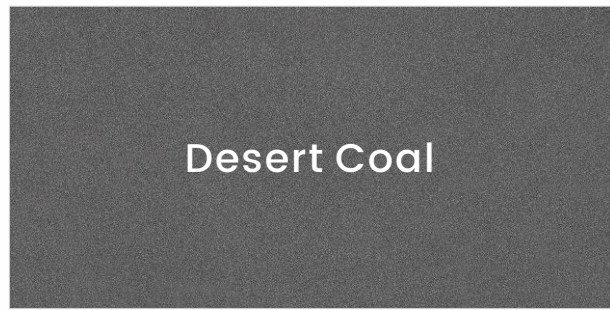
600x1200mm



Surface : Premium Matt



Surface : Smooth Polished



Desert Coal



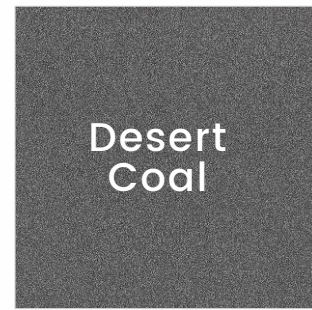
Desert Coal



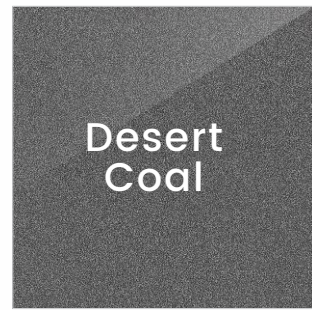
Desert Gesso



Desert Gesso



Desert
Coal



Desert
Coal



Desert
Gesso



Desert
Gesso



Desert
Bronze

CASADESERT SUPER PLUS COLOR RANGE



INDEX

RANGE

BASIC

PLUS

SUPER PLUS

TECH. DATA

DESERT COAL

SIZE : 600x1200mm | SURFACE : PREMIUM MATT | CATEGORY : SUPER PLUS



SIZE : 600x1200mm | SURFACE : SMOOTH POLISHED | CATEGORY : SUPER PLUS



SIZE : 600x600mm | SURFACE : SMOOTH POLISHED | CATEGORY : SUPER PLUS

INDEX

RANGE

BASIC

PLUS

SUPER PLUS

TECH. DATA

DESERT COAL

SIZE : 600x600mm | SURFACE : PREMIUM MATT | CATEGORY : SUPER PLUS



INDEX

RANGE

BASIC

PLUS

SUPER PLUS

TECH. DATA

DESERT COAL

CLICK HERE

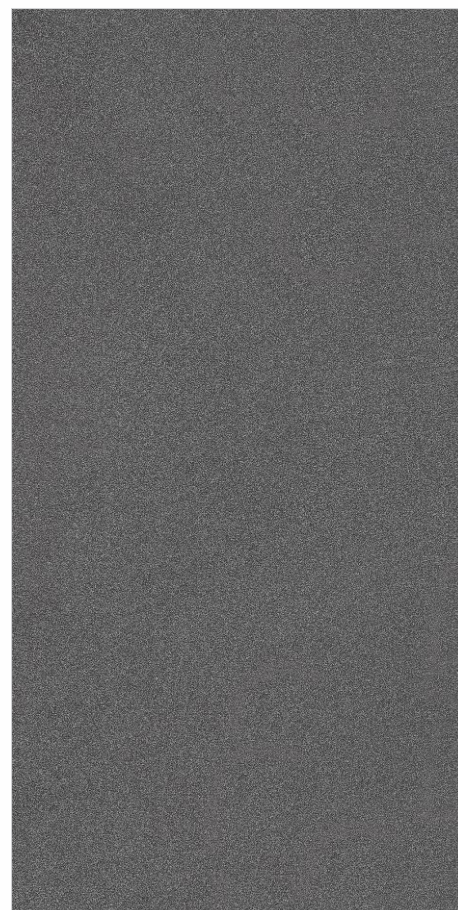


For
360°
VISUAL

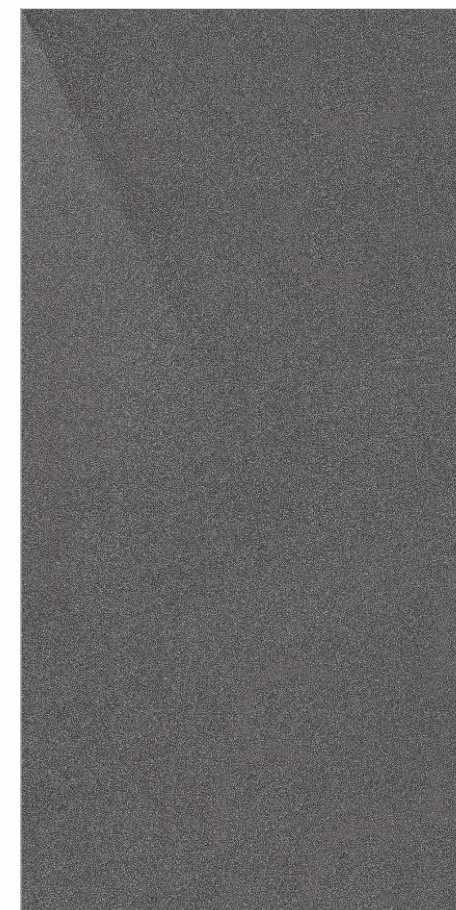


Category : Super Plus

600x1200mm

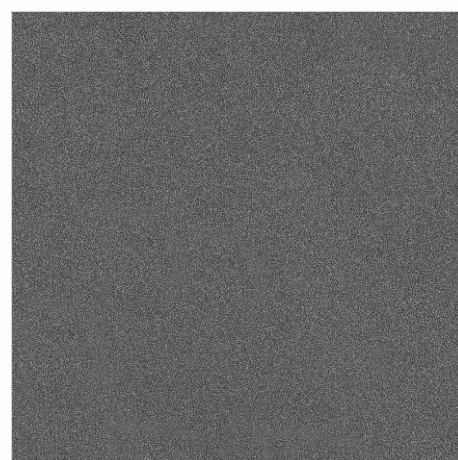


Surface : Premium Matt

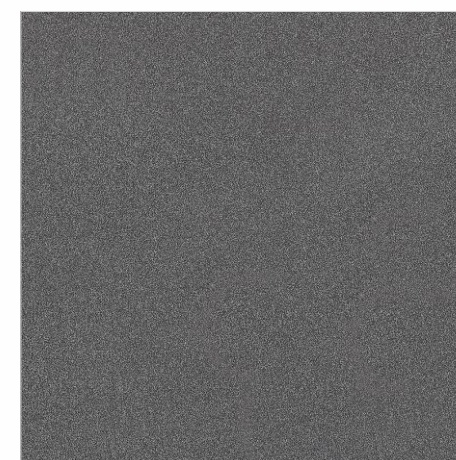


Surface : Smooth Polished

600x600mm



Surface : Premium Matt



Surface : Smooth Polished



INDEX

RANGE

BASIC

PLUS

SUPER PLUS

TECH. DATA

DESERT GESSO

SIZE : 600x1200mm | SURFACE : PREMIUM MATT | CATEGORY : SUPER PLUS


**CASA
DESERT**
FULL BODY TILES

SIZE : 600x1200mm | SURFACE : SMOOTH POLISHED | CATEGORY : SUPER PLUS



SIZE : 600x600mm | SURFACE : SMOOTH POLISHED | CATEGORY : SUPER PLUS

INDEX

RANGE

BASIC

PLUS

SUPER PLUS

TECH. DATA

DESERT GESSO

SIZE : 600x600mm | SURFACE : PREMIUM MATT | CATEGORY : SUPER PLUS


CASA
DESERT
FULL BODY TILES



INDEX

RANGE

BASIC

PLUS

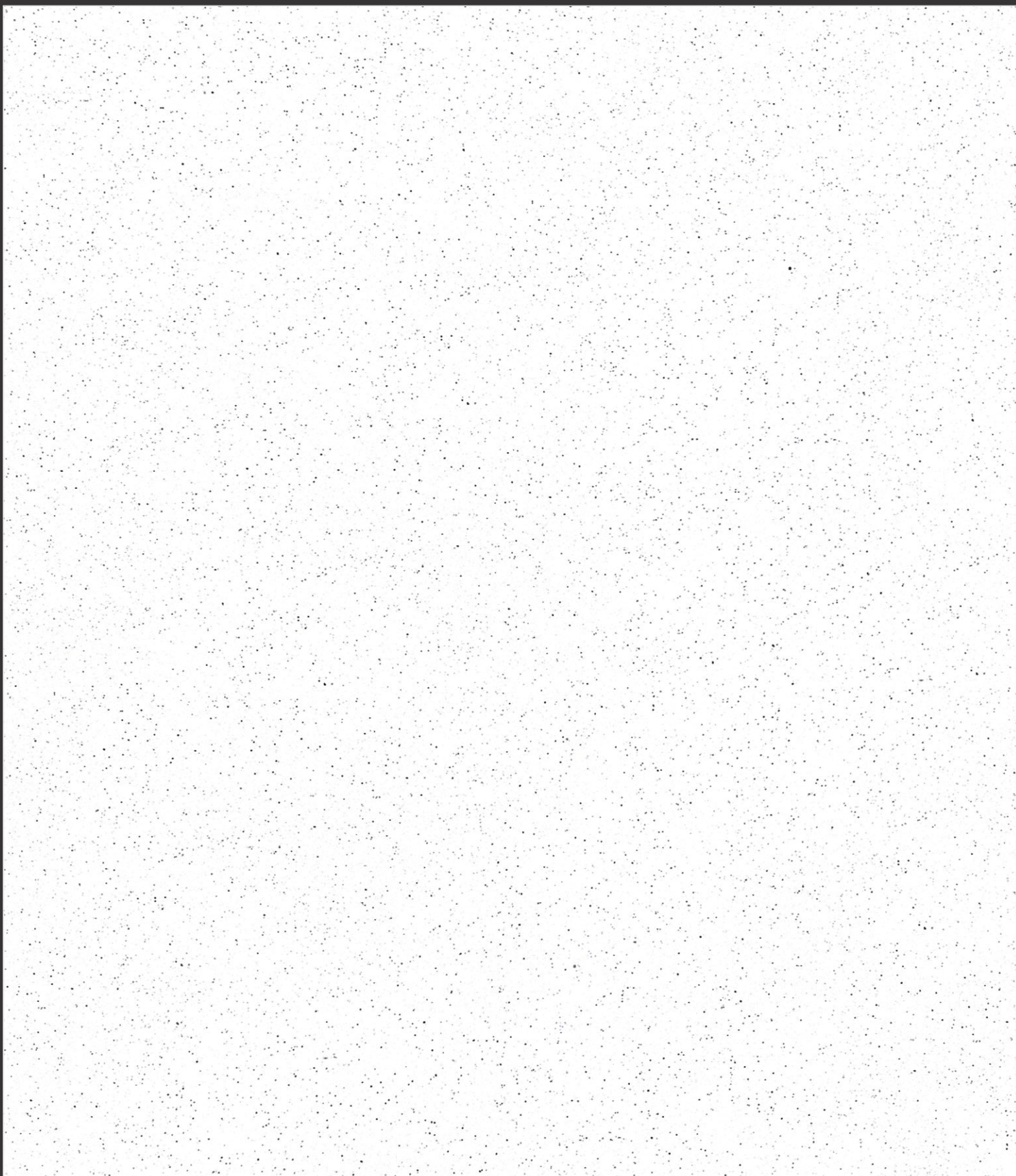
SUPER PLUS

TECH. DATA

DESERT GESSO

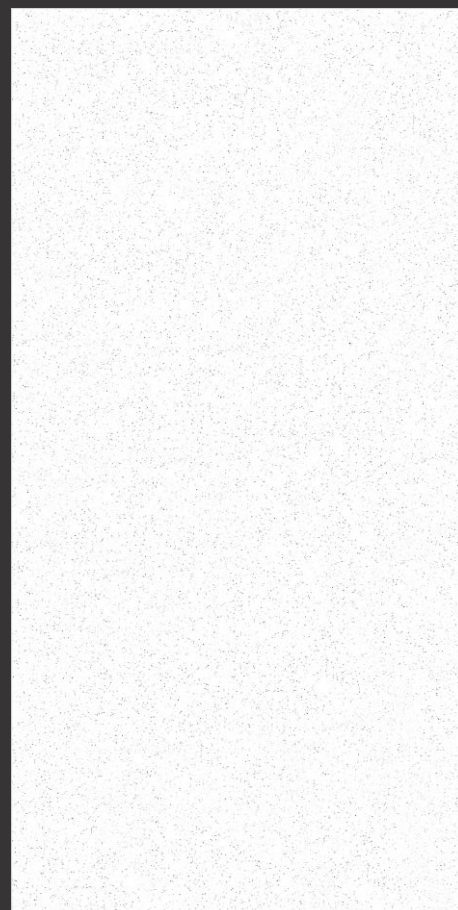
CLICK HERE 

For
360°
VISUAL

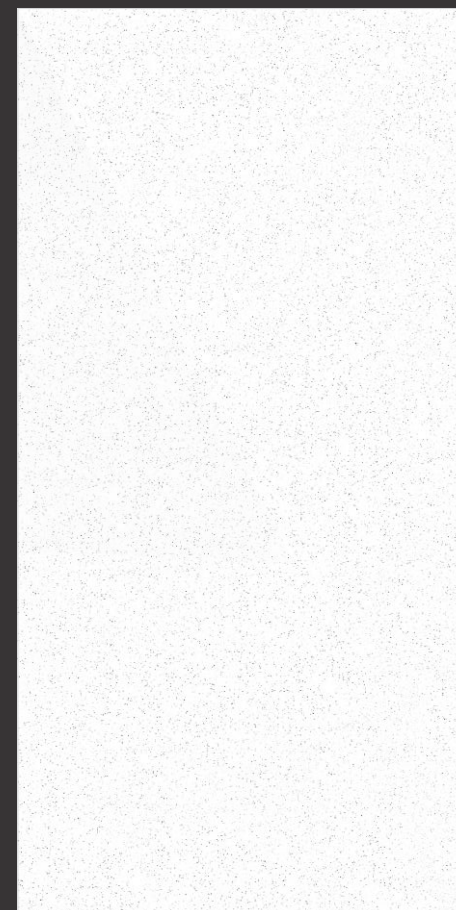


Category : Super Plus

600x1200mm

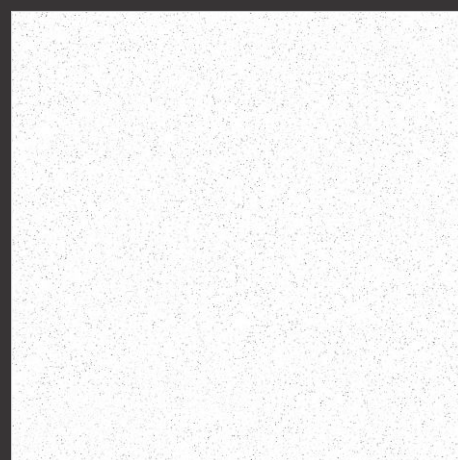


Surface : Premium Matt

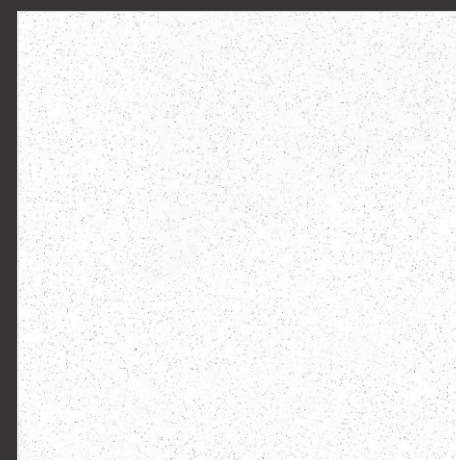


Surface : Smooth Polished

600x600mm



Surface : Premium Matt



Surface : Smooth Polished

DESERT BRONZE

SIZE : 600x600mm | SURFACE : PREMIUM MATT | CATEGORY : SUPER PLUS



INDEX

RANGE

BASIC

PLUS

SUPER PLUS

TECH. DATA

DESERT BRONZE

CLICK HERE

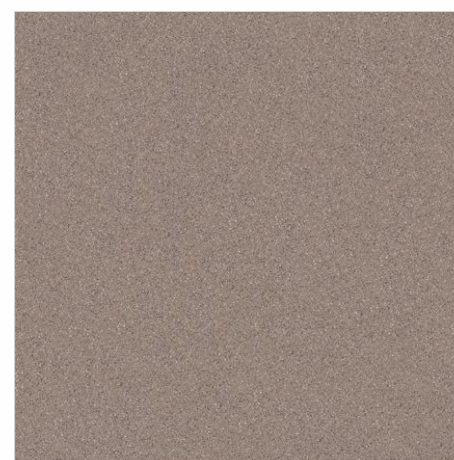


For
360°
VISUAL



Category : Super Plus

600x600mm



Surface : Premium Matt


CASA
DESERT
FULL BODY TILES

INDEX

RANGE

BASIC

PLUS

SUPER PLUS

TECH. DATA



- Certification**
- Installation Process**
- Technical Specification**
- Tile Cleaning**
- Installation System**
- Casa All Collection**

OUR NAME STANDS FOR TECHNICAL AND AESTHETIC EXCELLENCE.



Around the world, we proudly promote materials that best express that Made in India aesthetic, style and technical excellence.

On the international market, our name is synonymous with Full body tiles technical porcelain stoneware that offers extremely high technical and aesthetic performance. We transform top quality raw materials into ceramic projects able to interpret the many requirements of a continuously evolving world.



Tiles of India is the certified brand of origin which exclusively marks all products fully manufactured in India representing the decades old values system of the Indian Ceramic Industry. We support all those values promoted by the Indian Ceramics code of ethics, from **100% Indian production to social and environmental responsibility.**



100% ISO 9001:2015 certification is internationally recognised and represents a guarantee of the excellence and quality of the management system. CASA TILES decided of its own accord to undertake this important process, adopting a set of rules, responsibilities and checks to improve the efficiency of processes and customer satisfaction, to boost its competitiveness and maintain compliance with the highest quality standards.



SAFETY SYSTEM MANAGEMENT

The health and wellbeing of employees are crucial priorities for CASA TILES. the attainment of ISO 45001 certification strengthens a business culture that sees safety not simply as a question of regulatory compliance, but as an essential part of working processes. Regulation is a necessary tool for generating a new model of sustainable competitiveness that can improve company performance across the board.

ECO-SUSTAINABLE DEVELOPMENT



ENVIRONMENTAL MANAGEMENT

CASA TILES conforms with the environmental regulations envisaged by the ISO 14001 certification. This certification measures and controls the reduced environmental impact of production sites, through an environmental management system based on strict parameters.

Casa Tiles CONTRIBUTES TOWARDS ENERGY EFFICIENCY THROUGH:

- 100% recycling of waters used
- 100% recycling of unfired and fired waste
- 100% recycling of packaging and pallets
- 60% recycling of waste.

LOW ATMOSPHERIC GAS EMISSIONS

- 100% Water Consumption Savings
- 100% Recycling of Unfired Waste
- 100% Recycling of Fired Waste
- 100% Recycled Packaging
- 70% Recycling of Industrial Waste
- Noise Pollution Monitoring
- 100% Recycled Pallets



LOW ATMOSPHERIC GAS EMISSIONS



100% WATER CONSUMPTION SAVINGS



100% RECYCLING OF UNFIRED WASTE



100% RECYCLING FIRED WASTE



100% RECYCLED PACKAGING



90% RECYCLING OF INDUSTRIAL WASTE



NOISE POLLUTION MONITORING



100% RECYCLED PALLETS

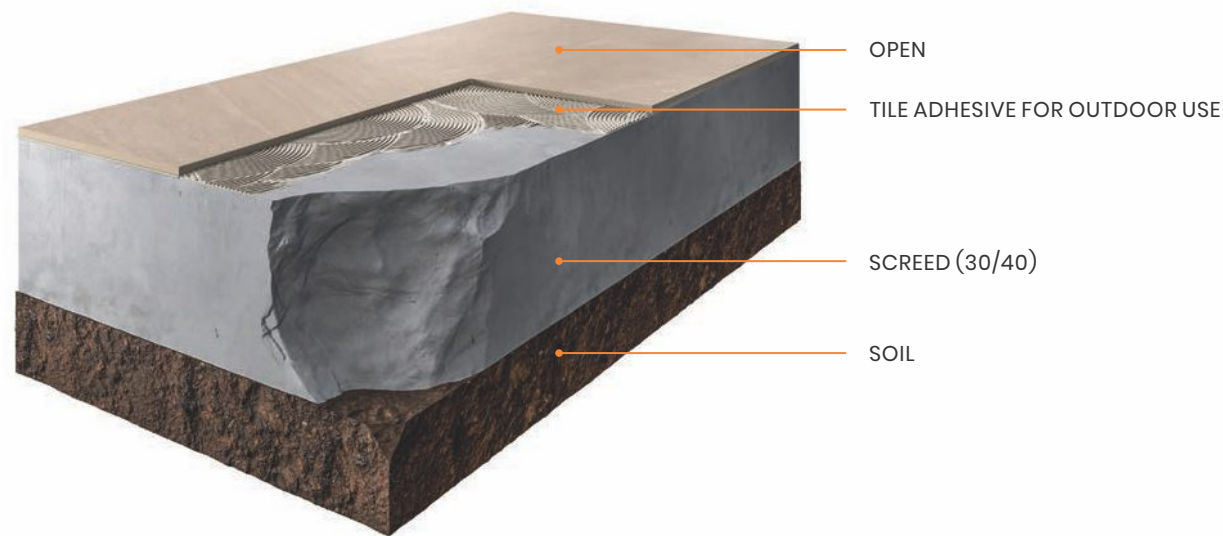


IMC is a voluntary certification system, for the design, construction and management of high performance sustainable buildings; it promotes an integrated design system that concerns the whole building. It is developed by the U.S. INTERNATIONAL MANAGEMENT COUNCIL (USIMC), an association which provides a global approach to sustainability, providing recognition for virtuous performance levels in key areas of human and environmental health. The system is based on rating credits for each of the requisites featuring the sustainability of the building. The sum of the credits composes the certification level achieved.

LAYING ON SCREED



SUGGESTED PROCESS



CASADESERT COLLECTION

INSTALLATION SYSTEMS



Clean the existing surface and check that the screed has been properly prepared: flat, dry and cured. Spread the adhesive evenly over the surface.



मौजूदा सतह को साफ करें और जांच लें कि स्क्रीड सही से तैयार किया गया है: सपाट, सूखा और ठीक हो। सतह पे एडहेसिव को समान रूप से फैलाएं।



Put the tiles in place and tap down gently with a rubber hammer to drive out the air and ensure perfect bonding. Fit the 4/5 mm spacers into the joints.



स्लैब को जगह में रखें और धीरे से एक रबर के हथौड़े से नीचे टैप करें और हवा को बाहर निकाल सही बॉन्डिंग सुनिश्चित करें। जोड़ों में 4 या 5 मिमी स्पेसर फिट करें।



Once the glue has dried, remove the spacers, grout the joints and clean thoroughly to remove any residues.



गोंद सूख जाने के बाद, स्पेसर को हटा दें, जोड़ों को ग्राउट करें और उसके कोई अवशेष हटाने के लिए अच्छी तरह से सतह साफ करें।



INDEX

RANGE

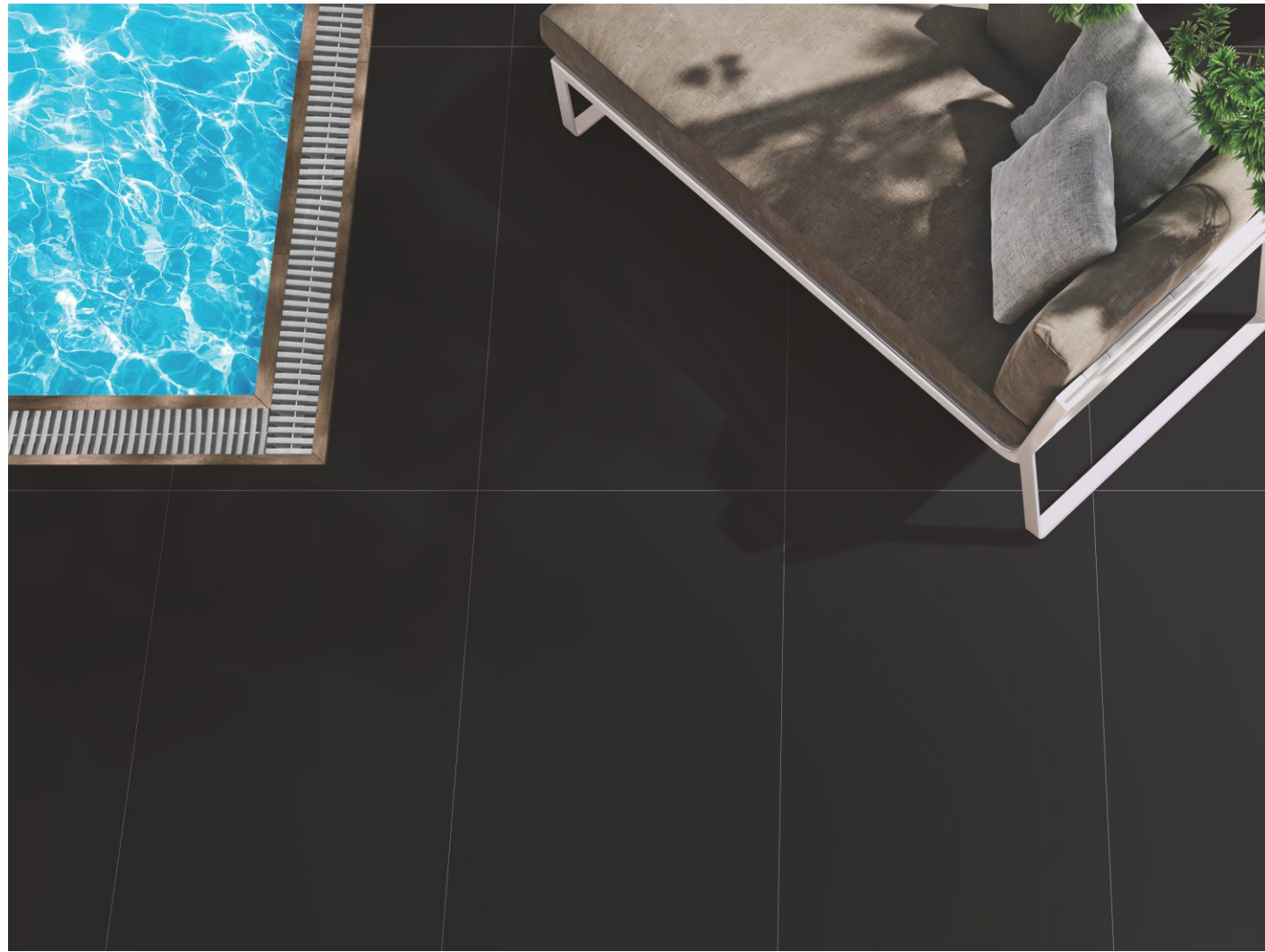
BASIC

PLUS

SUPER PLUS

TECH. DATA

LAYING AS RAISED PAVING



SUGGESTED PROCESS



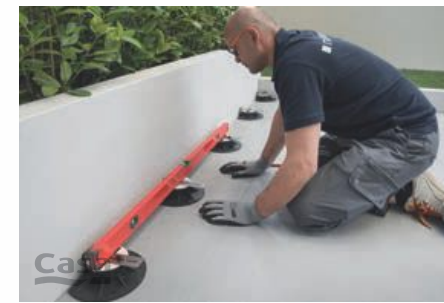
INSTALLATION SYSTEMS



Clean the existing surface and check that the screed is level to select the right type of pedestal. The screed must be dry and cured. Prepare the chosen pedestals, cutting the ones around the edge to size and removing any unwanted wings.



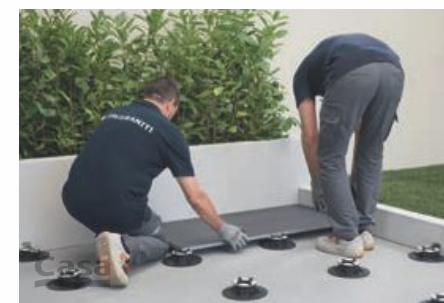
मौजूदा सतह को साफ करें और जांच लें कि स्क्रीड सही प्रकार के पेडस्टल को चुनने के लिए स्तर पर है। स्क्रीड को सूखा और ठीक किया जाना चाहिए। चुने हुए पेडस्टल को तैयार करें। उन्हें आकार देने के लिए किनारे के चारों ओर काटकर तैयार करें और किसी अवांछित विंग्स को भी हटा दें।



Arrange the grid of pedestals in accordance with the laying diagram, starting with those around the edge. Fit the protective tile edge clips on the pedestals against any walls.



पेडस्टल के ग्रिड को आरेख के अनुसार व्यवस्थित बिछाए, किनारे के आसपास से शुरू करें। दीवार की तरफ के पेडस्टल पर प्रोटेक्टिव टाइल एज क्लिप्स फिट करें।



Lay the tiles on the pedestals dry. Add a pedestal in the middle of the tiles, removing the spacer wings. Systematically check the flatness and adjust the heights of the pedestals with the adjuster key to compensate for any unevenness in the substrate. A little slope of the substrate is always recommended in order to prevent water stagnation underneath the surface.

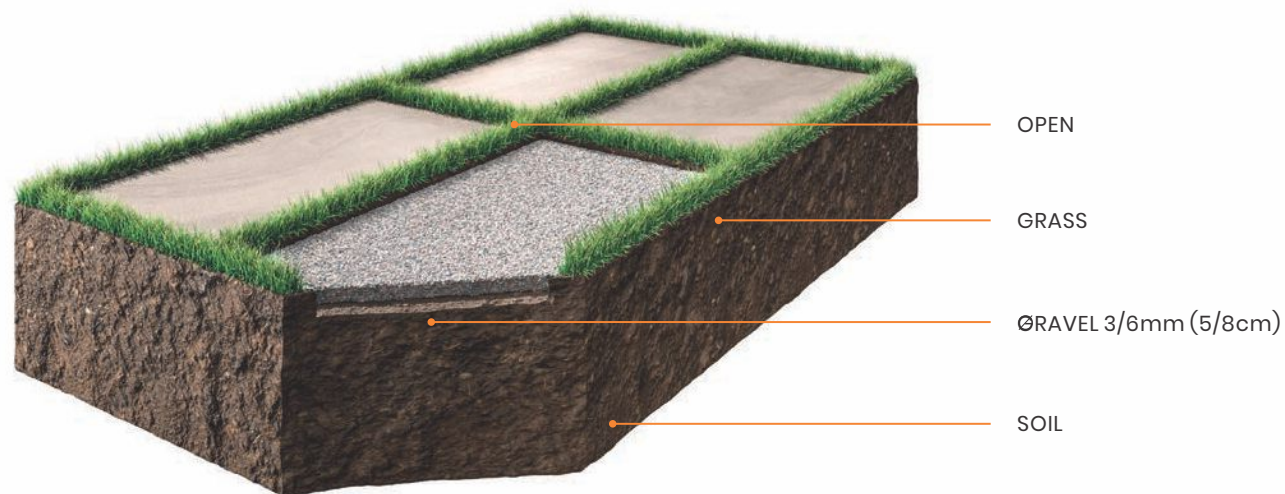


पेडस्टल पर स्लैब को सूखा बिछाए। स्लैब के बीच में एक पेडस्टल जोड़ें, स्पेसर विंग को हटाए। सब्सट्रेट में किसी भी असमानता की भरपाई के लिए एडजस्टर की को इस्तेमाल कर के व्यवस्थित रूप से पेडस्टल की ऊंचाई और समतलता की जाँच करें। पानी का ठहराव रोकने के लिए सतह के नीचे सब्सट्रेट का थोड़ा ढलान हमेशा अनुशंसित है।

LAYING ON GRASS



SUGGESTED PROCESS



INSTALLATION SYSTEMS



Place the slabs dry on the grass and check that the gap between them is the same over the entire laying surface.



स्लैब को घास पर सुखा बिछाए और जांचें कि उनके बीच का अंतर पूरी बिछाने की सतह पर समान है।



Mark out the area of turf to be removed and dig out to a depth of at least 5 cm. Create a layer of at least 3 cm of gravel (diam. 3/6 mm).



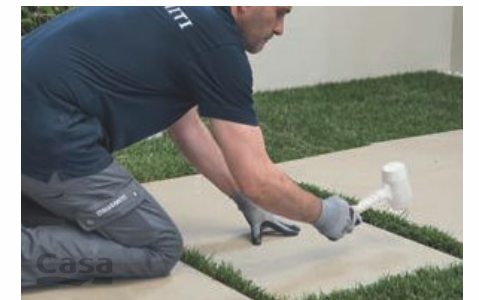
हटाए जाने वाले टर्फ के क्षेत्र को चिह्नित करें और कम से कम 5 सेमी की गहराई तक खोदें। कम से कम 3 सेमी बजरी की एक परत बनाएं (व्यास 3/6 मिमी)।



After checking that the substrate created is level, put the slabs in place and tap down gently with a rubber hammer to settle them into place and eliminate any unevenness.



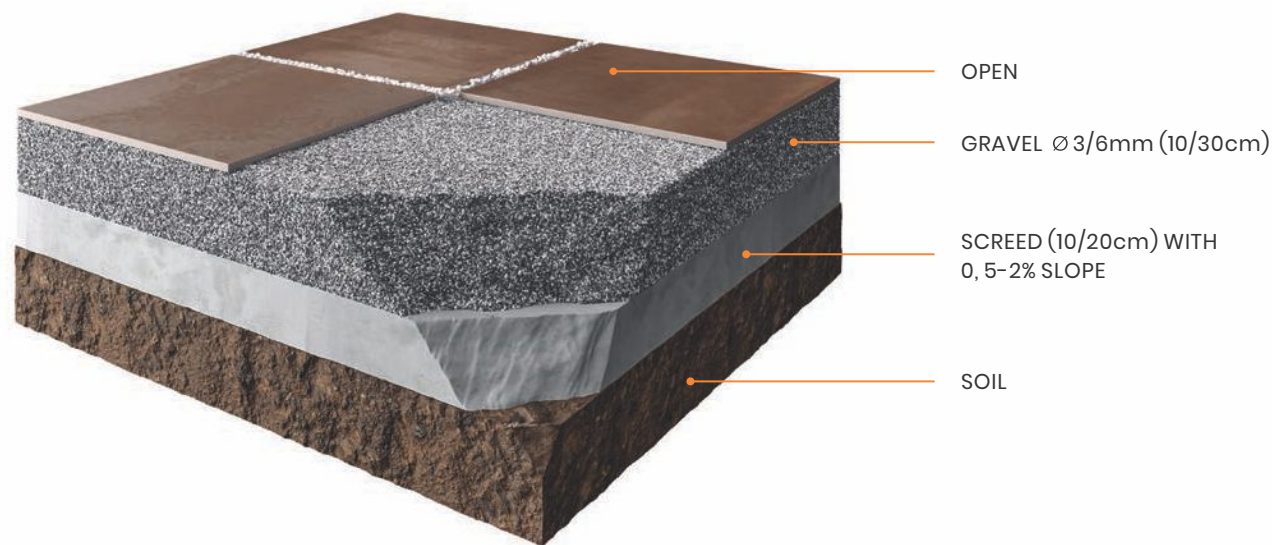
बनाया गया सब्सट्रेट स्तर होने की जाँच करने के बाद स्लैब रखें और एक रबर हथौड़े के साथ उन्हें जगह में व्यवस्थित करने के लिए धीरे से नीचे टैप करें और किसी भी तरह की असमानता को दूर करें।



LAYING ON SCREED



SUGGESTED PROCESS



CASADESERT COLLECTION

INSTALLATION SYSTEMS



Create a layer of at least 5 cm of gravel (diam. 3/6 mm) on the existing substrate. Level the surface with a straightedge and check the flatness.



कम से कम 5 सेमी बजरी की परत (डायम 3/6 मिमी) मौजूदा सबस्ट्रेट पर बनाये। सतह को स्ट्रेट एज के साथ लेवल करे और उसकी समतलता की जाँच करें।



Place the slabs dry on the gravel and check that the gap between them is the same over the entire laying surface. Tap down gently with a rubber hammer to settle them into place and eliminate any unevenness.



स्लैब को बजरी पर सूखा बिछाए और जांचें कि उनके बीच का अंतर पूरी बिछाने की सतह पर समान है। उन्हें जगह में बिछाने के लिए रबर के हथौड़े से धीरे से नीचे की ओर टैप करें और किसी भी असमानता को दूर करें।



Check the flatness of the surface created. Add gravel in the joints to level the paving. Decorative gravel larger in diameter than the type use for the substrate can also be used in the joints.



बनाई गई सतह की समतलता की जाँच करें। फर्श को समतल करने के लिए जोड़ों में बजरी डालें। सबस्ट्रेट के लिए उपयोग किए जाने वाले प्रकार की तुलना में व्यास में बड़े सजावटी बजरी का उपयोग जोड़ों में भी किया जा सकता है।

INDEX

RANGE

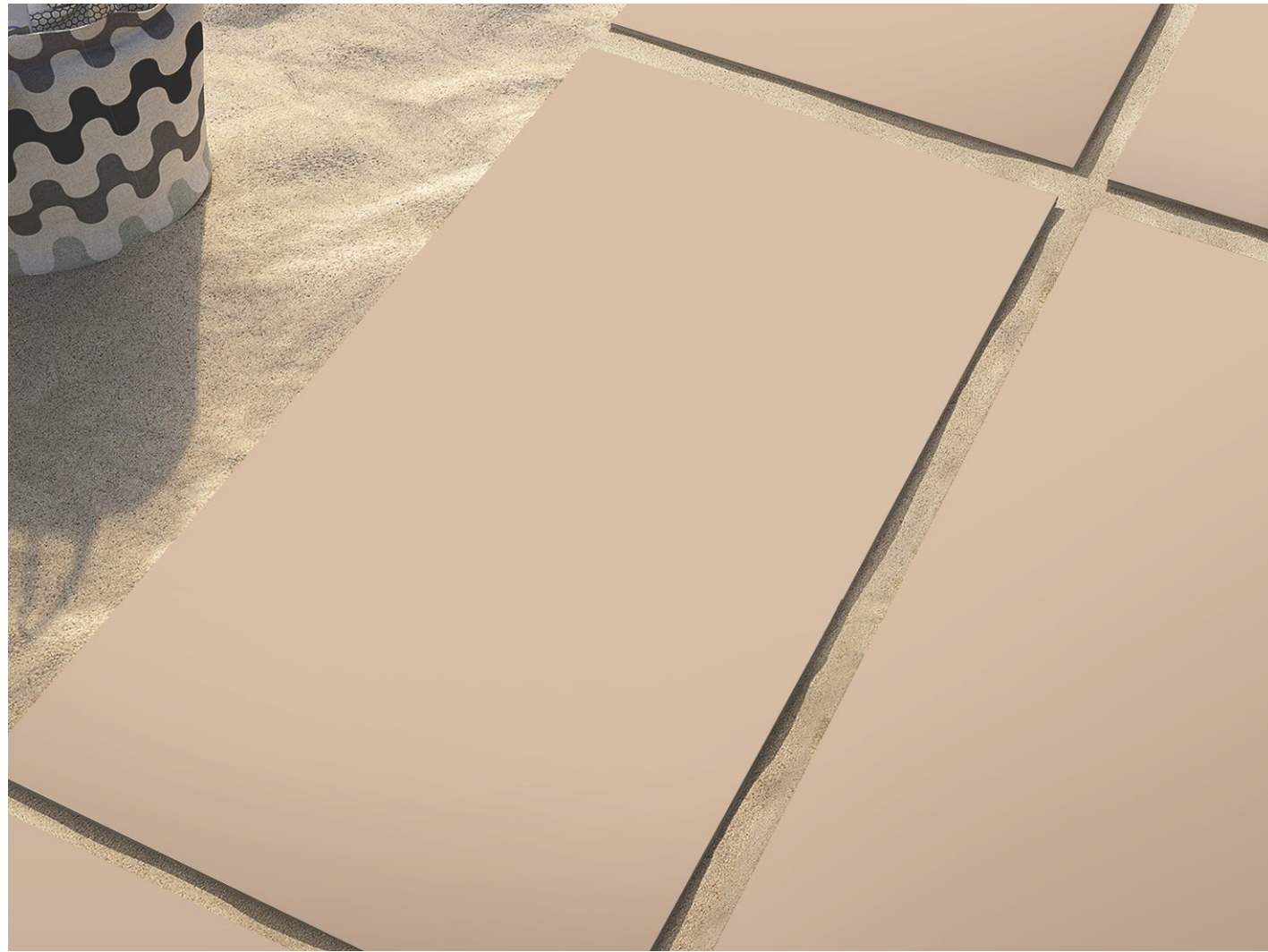
BASIC

PLUS

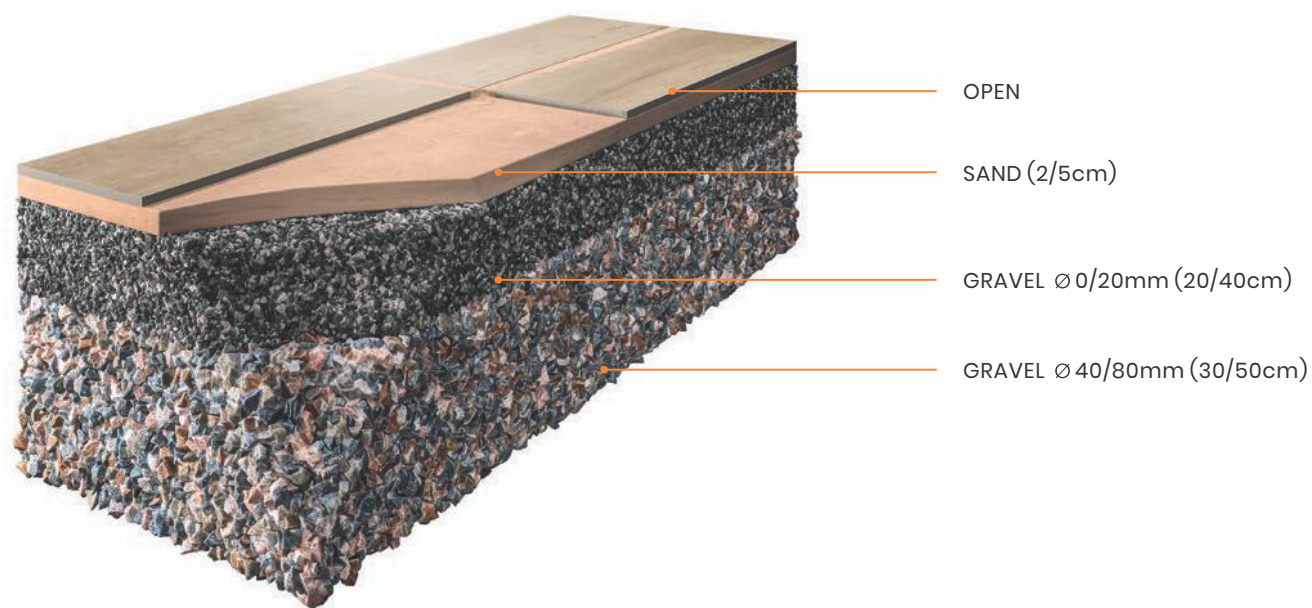
SUPER PLUS

TECH. DATA

LAYING ON SAND



SUGGESTED PROCESS



INSTALLATION SYSTEMS



Prepare a layer of sand at least 5 cm thick on the existing substrate (screed or gravel). Level the surface with a straightedge and check the flatness.



कम से कम 5 सेमी मोटी रेत की परत मौजूदा सब्सट्रेट (स्क्रीड या बजरी) पर तैयार करें। सतह को स्ट्रेट एज के साथ लेवल करें और उसकी समतलता की जाँच करें।



Place the slabs dry on the sand and check that the gap between them is the same over the entire laying surface. Tap down gently with a rubber hammer to settle them into place.



स्लैब को रेत पर सूखा बिछाए और जांचें कि उनके बीच का अंतर पूरी बिछाने की सतह पर समान है। उन्हें जगह में बिछाने के लिए रबर के हथौड़े से धीरे से नीचे की ओर टैप करें और किसी भी असमानता को दूर करें।



Add sand in the joints to level the paving. Clean the surface of the slabs.



फर्श को समतल करने के लिए जोड़ों में रेत डालें। स्लैब की सतह को साफ करें।



TECHNICAL SPECIFICATION

TECHNICAL DETAILS	STANDARD AS PER ISO-13006/EN176 GROUP BIa	MEAN VALUE OF CASA FULL BODY VITRIFIED TILES	METHOD OF TEST
Deviation In Length & Width	± 0.60%	± 0.10%	ISO-10545-2
Deviation In Thickness	± 5.00%	± 2.00%	ISO-10545-2
Straightness Of Sides	± 0.50%	± 0.10%	ISO-10545-2
Rectangularity	± 0.60%	± 0.10%	ISO-10545-2
Surface Flatness	± 0.50%	± 0.10%	ISO-10545-2
Glossiness	Gloss Meter	Min. 90%	Glossometer
Water Absorption	≤ 0.50%	E ≤ 0.05%	ISO-10545-3
Breaking Strength	1300 N	2000 N	ISO-10545-4
Abrasion Resistance	Max. 175mm	Max. 145mm ³	ISO-10545-6
Moh's Hardness	Min. 6	≤ 6*	EN101
Frost Resistance	Frost Proof	Frost Proof	ISO-10545-12
Thermal Shock	No Damage	No Damage	ISO-10545-9
Moisture Expansion	Nil	Nil	ISO-10545-10
Thermal Expansion	< 9 x 10 ⁻⁶	< 6 x 10 ⁻⁶	ISO-10545-8
Resistance of House Hold Chemical	No Damage	No Damage*	ISO-10545-13
Stain Resistance	Resistance	Resistance*	ISO-10545-14
Slip Resistance (Friction Co Efficient)	> 0.40	> 0.40	ISO-10545-17

PACKING DETAILS

Collection	Size	Pieces / Box	Whight / box (approx)	Coverage Area / Box
Casa Desert	600x1200mm	2 Pieces	29.00kg	15.5 ft ² or 1.44 mtr ²
	600x600mm	4 Pieces	28.00kg	15.5 ft ² or 1.44 mtr ²

Disclaimer

Casa reserves the right to delete & amend either totally or partially, any of the colours, shapes, sizes, references and other technical specifications contained in this catalogue at anytime. The colours of tiles shown in this catalogue are purely illustrative to printing process. Please refer actual sample before final selection. The details of sizes, colours and references should be verified for typographical errors.

CLEANING & MAINTENANCE

TYPE OF STAIN	CHEMICAL PRODUCT	EXAMPLE
Grease	Alkaline - Solvent	Detergent
Oil	Solvent	Ammonia, Backing Soda
Ink	Oxidant - Solvent	Alcohol, Liquid Bleach, Nail Paint Remover
Rust	Acid	Hydrochloric Acid, Vinegar, Red Harpic
Lime	Acid	Descaling Reagent, Hydrochloric Acid
Cement	Acid	Hydrochloric Acid
Wine	Alkaline	Ammonia, Liquid Bleach
Coffee	Alkaline - Solvent	Ammonia, Liquid Bleach
Rubber	Solvent	Alcohol, Thinner
Plaster	Acid	Hydrochloric Acid
Candle Wax	Solvent	Alcohol, Thinner
Iodine	Oxidant	Liquid Bleach
Blood	Oxidant	Liquid Bleach
Ice Cream	Alkaline	Liquid Bleach

Our products are non porous (due to their high quality raw materials, stringent production parameters and state of the art technology), hence any dust or deposited waste cannot penetrate the surface. For most cases only a damp cloth is sufficient for cleaning. Regular cleaning highlights the aesthetic features of the surface and gives it exceptional shine. For highly aggressive cleaning caused by some common food and substances follow the table below.

INDEX

RANGE

BASIC

PLUS

SUPER PLUS

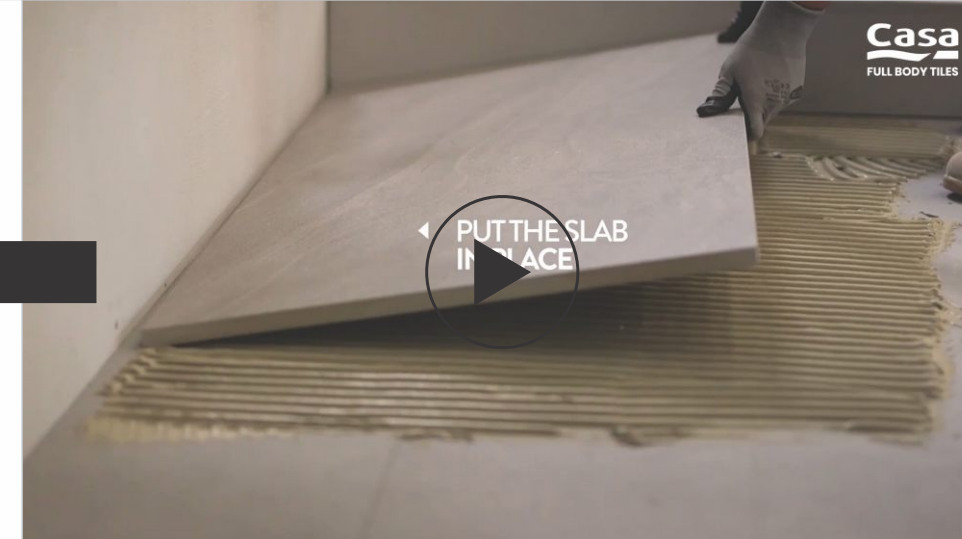
TECH. DATA

For more details,
check our tutorial videos
on the website and
on Youtube.

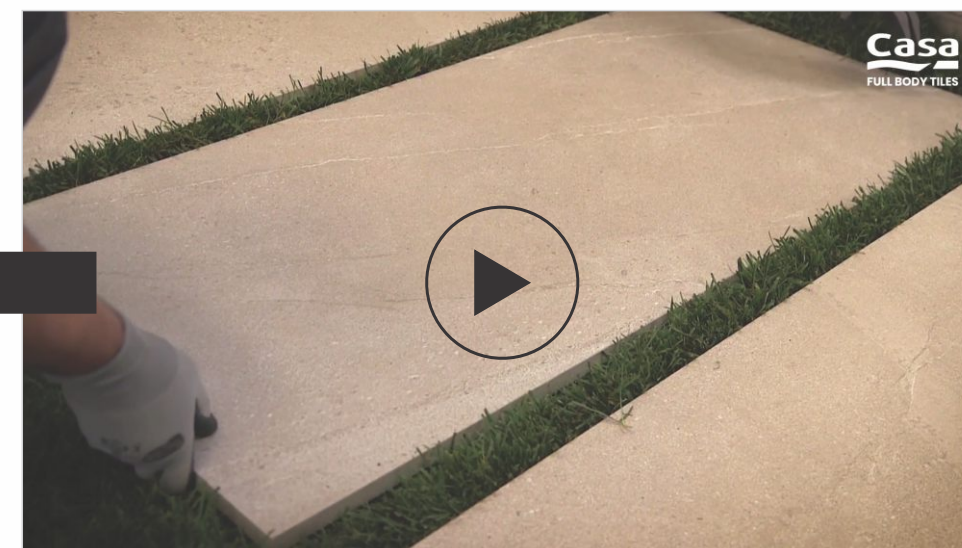


CASADESERT COLLECTION

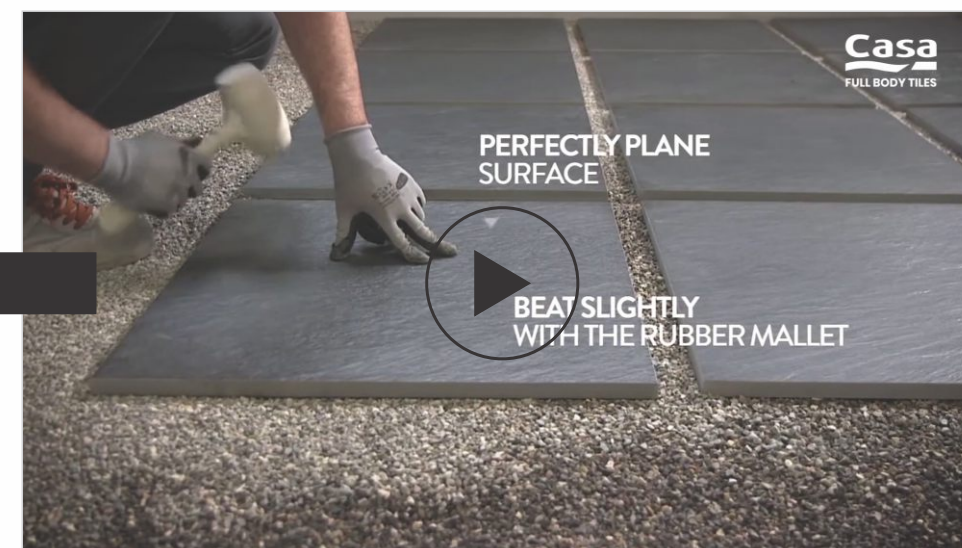
LAYING ON SCREED



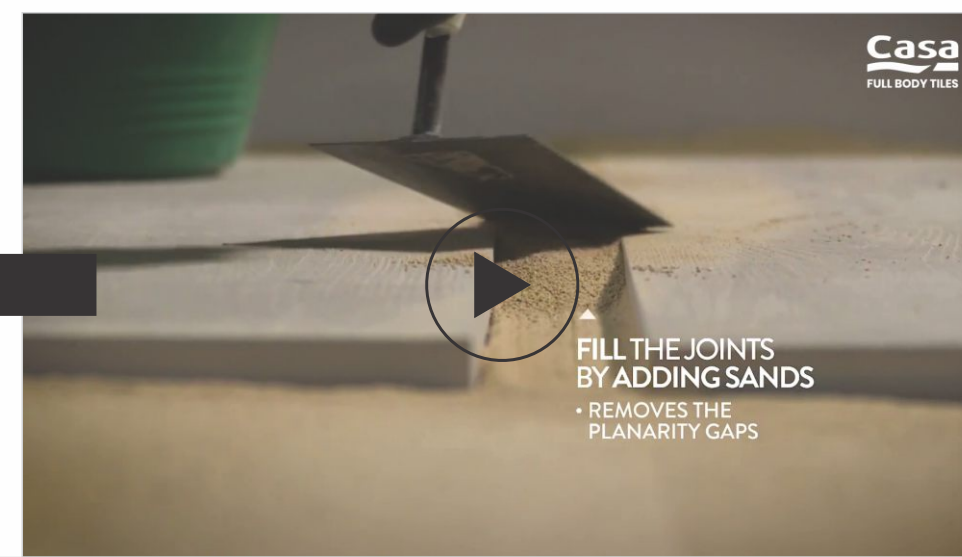
LAYING ON GRASS



LAYING ON GRAVEL



LAYING ON SAND



INDEX

BRICK

BOOST


LINER

SLATE

TECH. DATA

A PREMIUM COLLECTION

Casastone
BOLD SURFACES


CASA
DESERT
FULL BODY TILES

CASAYARD
EXQUISITE PUNCH, INSPIRED BY NATURE

CASADECK
Heavy Duty Tiles

CASA
POLO
FULLBODY TILES

CASA STEP
READY TO INSTALL FULLBODY STEPS

CasaArt
— FULLBODY TILE MOSAIC —

Casa 
Cloud
DIGITAL FULLBODY TILES

CLICK COLLECTION TO OPEN PRODUCT PDF



Casagres Tiles India

Sartanpar Road,
Opposite 166 Kva Substation,
Morbi - 363 621, Gujarat, India

casa@fullbodytiles.com
fullbodytiles.com

Copyright 2023 By Casagres Tiles India
(designed By: SipI) June 2023